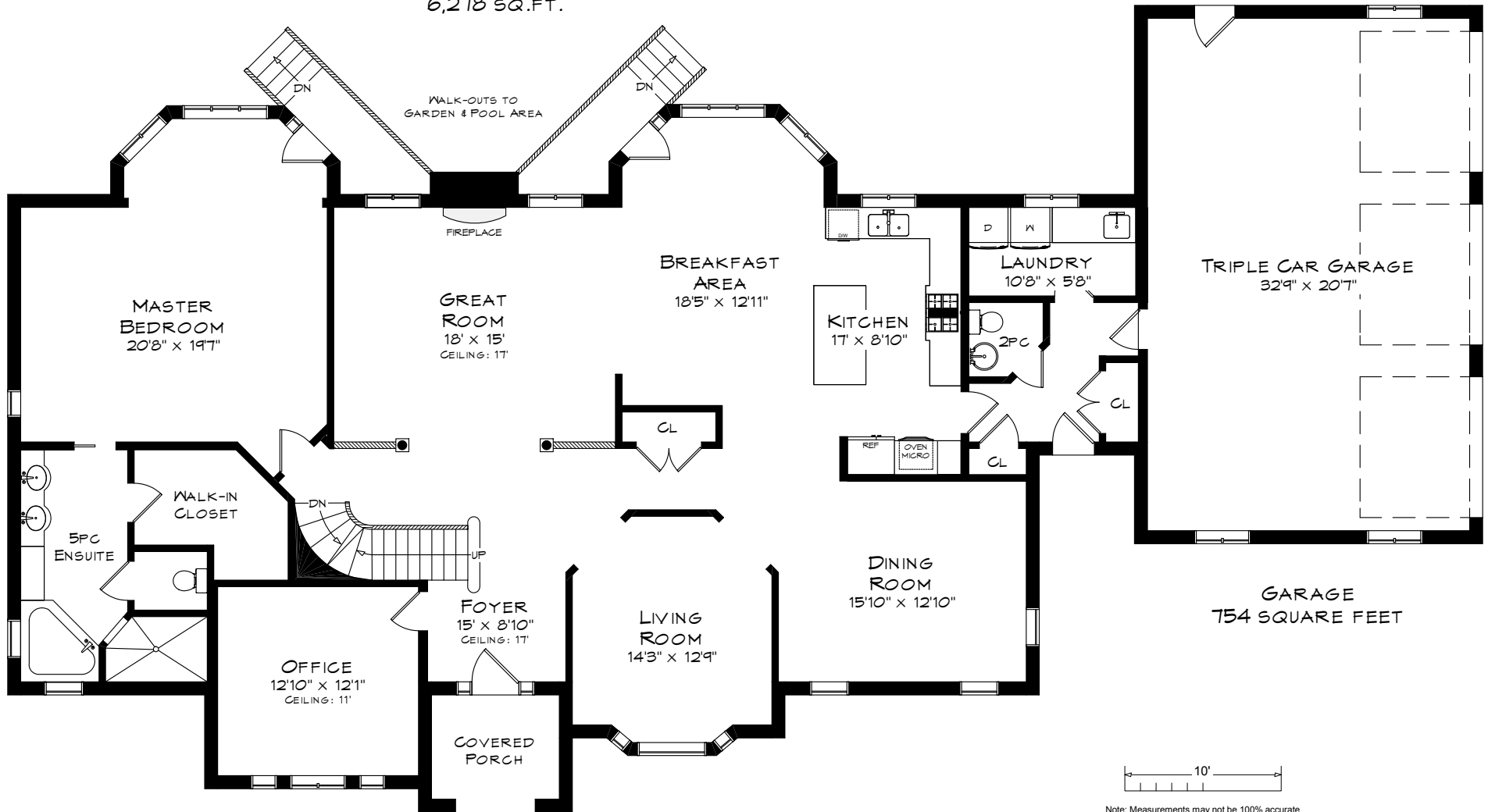


3 DEMPSEY COURT

TOTAL SQUARE FOOTAGE
6,278 SQ.FT.



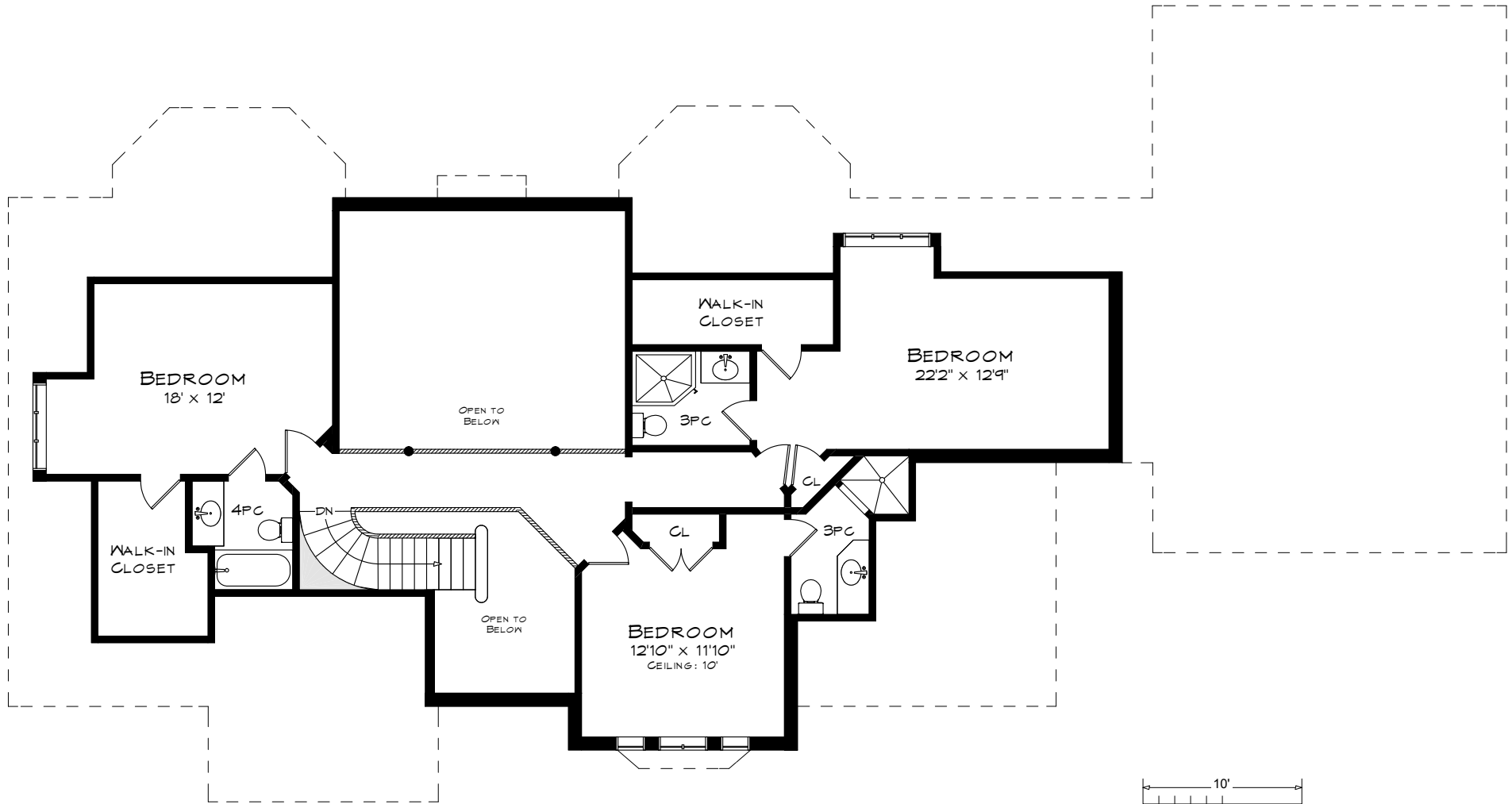
MAIN LEVEL
2,508 SQUARE FEET
CEILING: 9'

Note: Measurements may not be 100% accurate
and should be used as a guideline only. E&OE

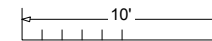
January - 2016
905-908-0241
info@dgriplan.ca

DGR

3 DEMPSEY COURT



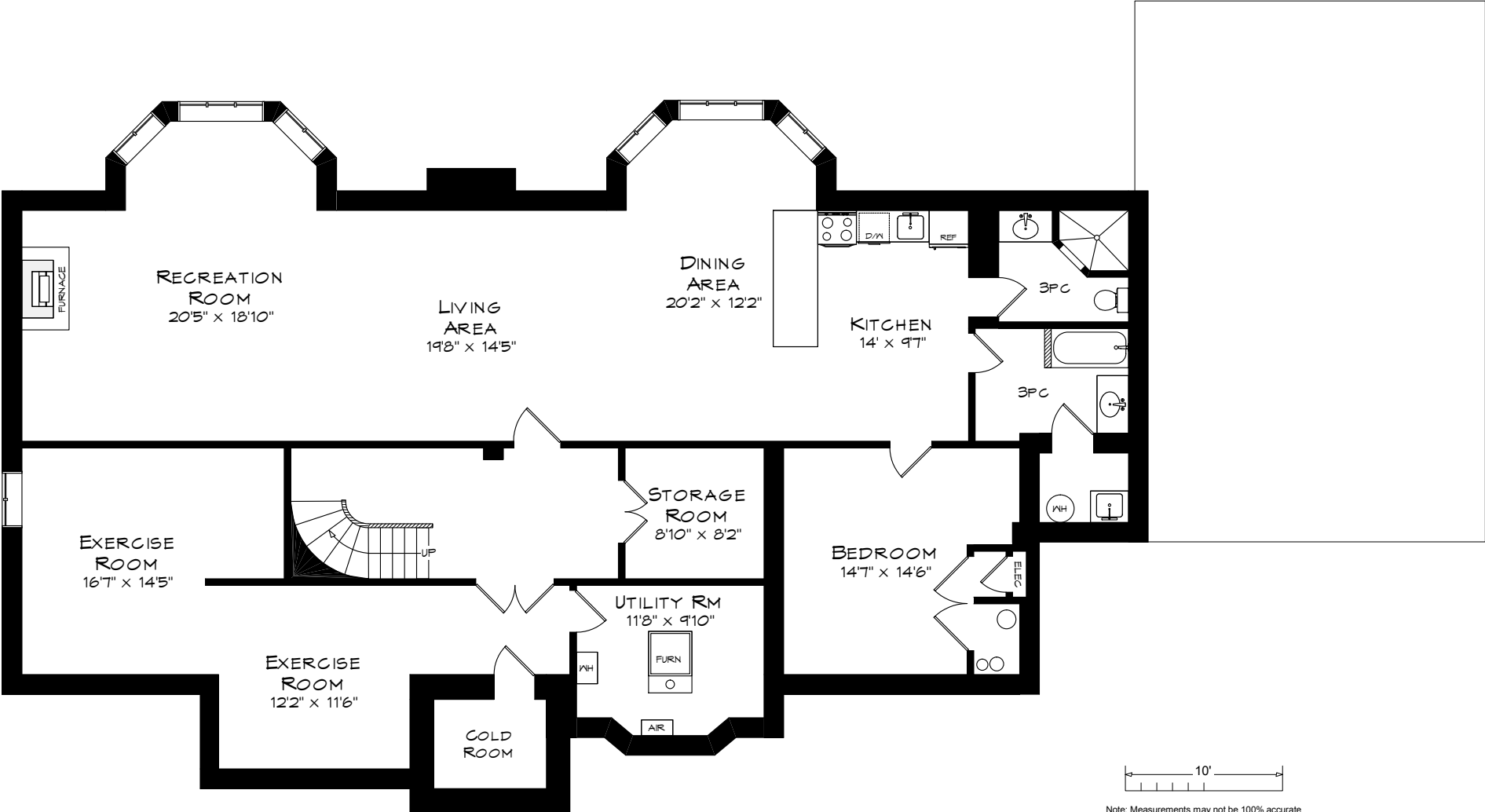
UPPER LEVEL
1,148 SQUARE FEET



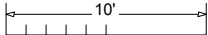
Note: Measurements may not be 100% accurate and should be used as a guideline only. E&OE

DGR
January - 2016
905-908-0241
info@dgrplan.ca

3 DEMPSEY COURT



LOWER LEVEL
2,622 SQUARE FEET



Note: Measurements may not be 100% accurate and should be used as a guideline only. E&OE
January - 2016
905-908-0241
info@dgriplan.ca

DGR