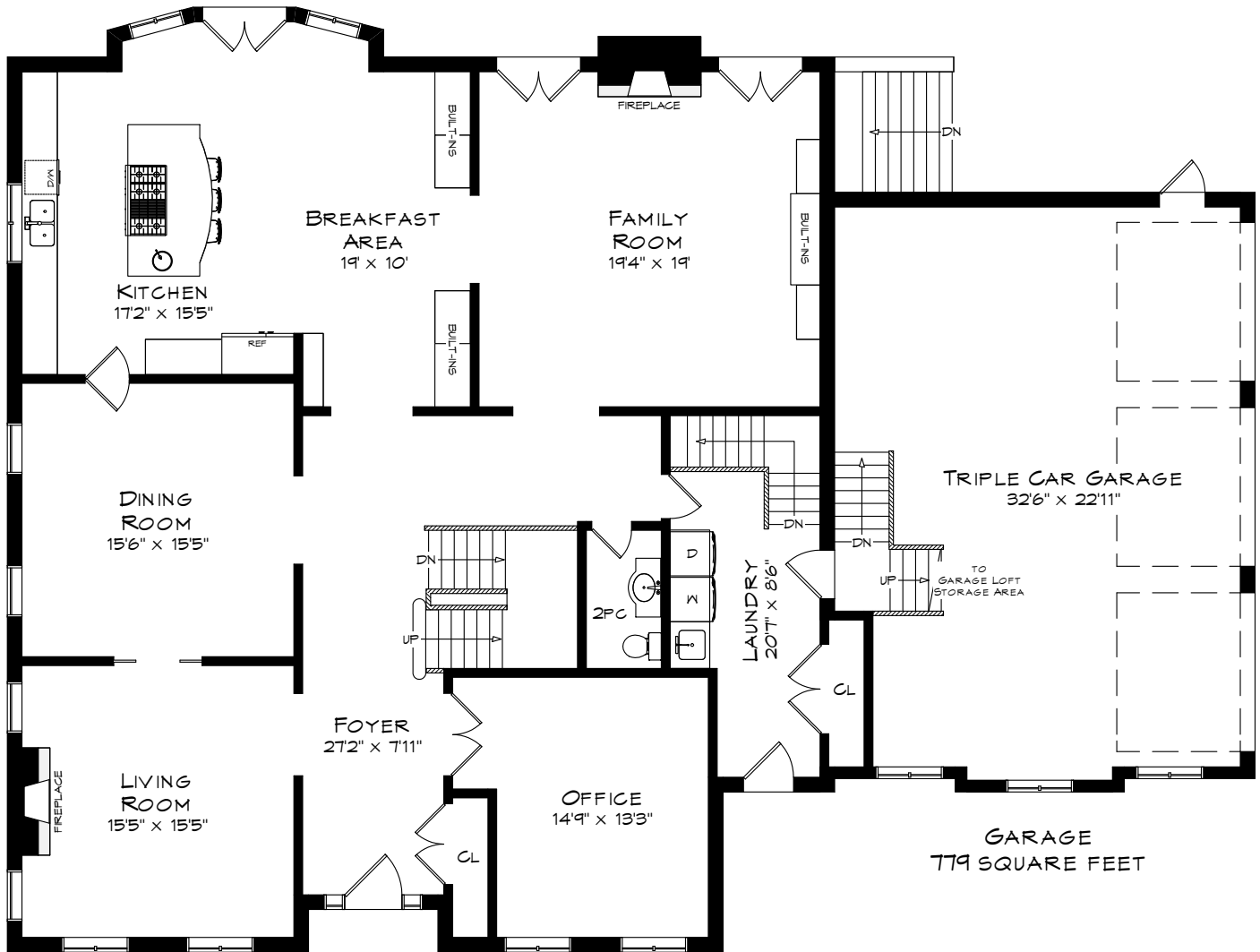
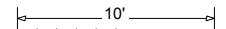


# 7610 TREMAINE ROAD

TOTAL SQUARE FOOTAGE  
7,108 SQ.FT.

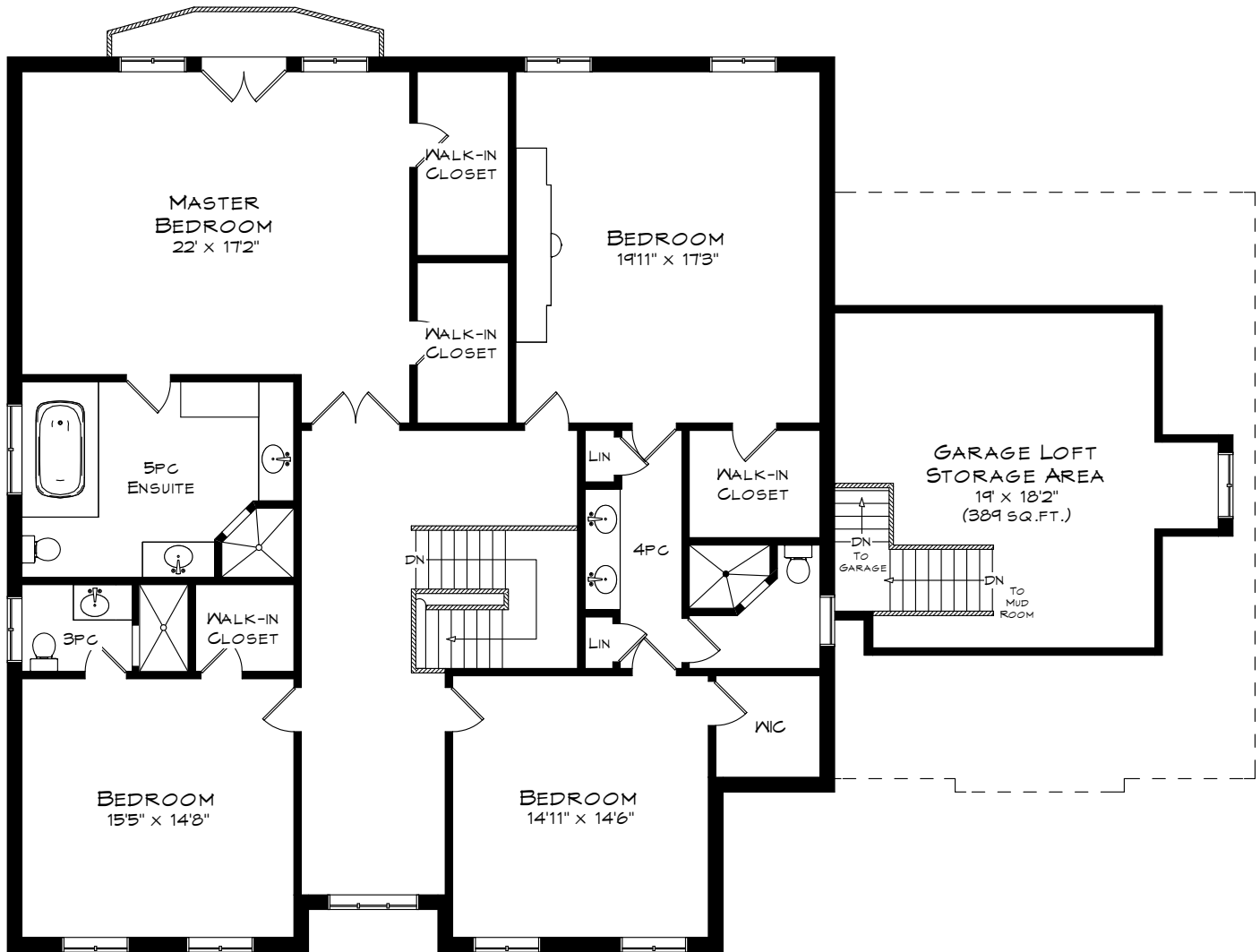


MAIN LEVEL  
2,372 SQUARE FEET  
CEILINGS: 10'

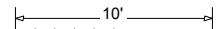


Measurements may not be 100% accurate  
and should be used as a guideline only.  
April - 2017

# 7610 TREMAINE ROAD

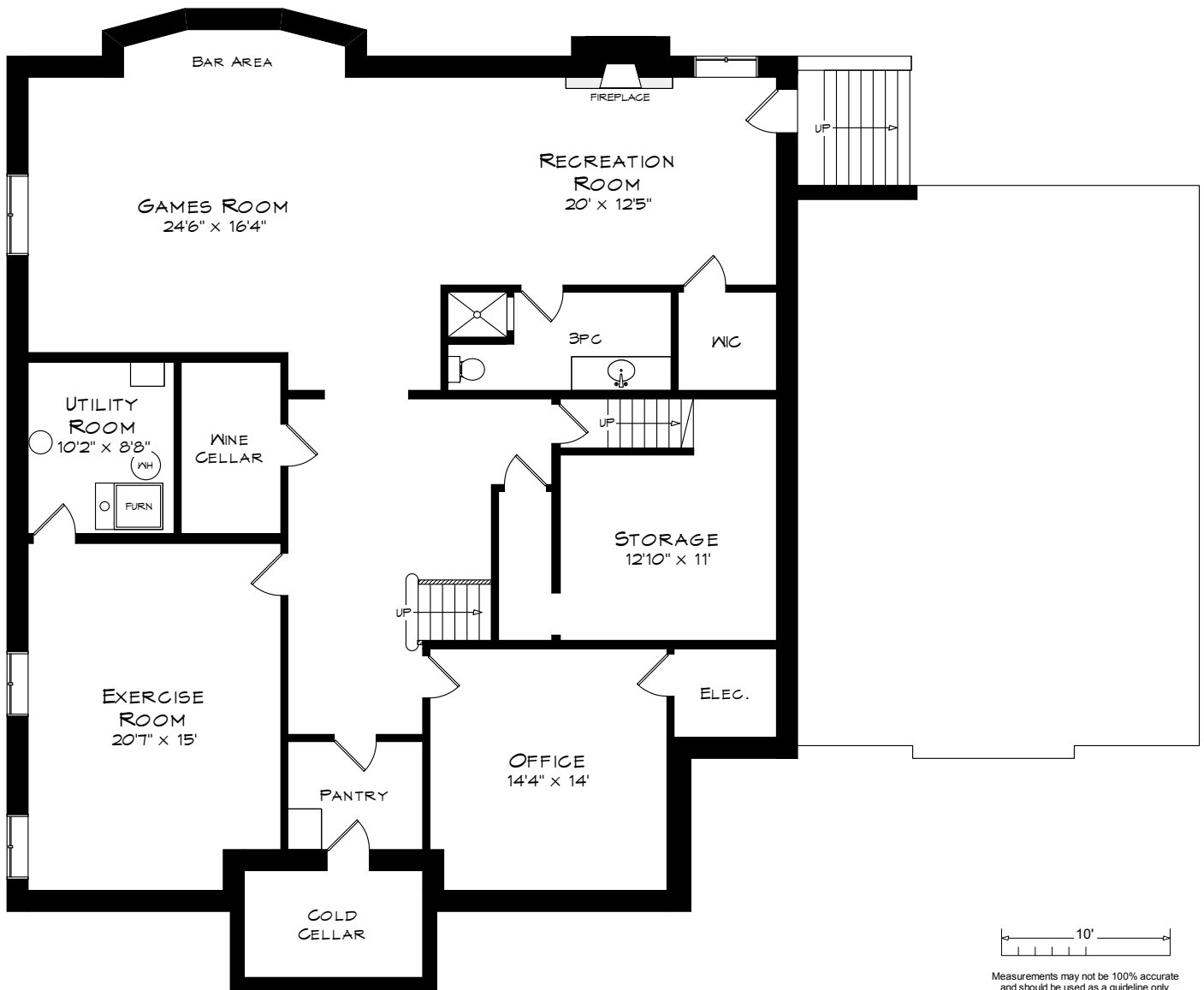


UPPER LEVEL  
2,306 SQUARE FEET  
CEILING: 9'



Measurements may not be 100% accurate  
and should be used as a guideline only.  
April - 2017

# 7610 TREMAINE ROAD



LOWER LEVEL  
2,430 SQUARE FEET