

BUILDING LOCATION SURVEY OF
 PART OF LOT 25
 CONCESSION 4 S.D.S.
 TOWN OF OAKVILLE
 REGIONAL MUNICIPALITY OF HALTON
 SCALE: 1" = 30'
 FRED G. CUNNINGHAM
 INCORPORATED
 ONTARIO LAND SURVEYORS
 1987

OLD LAKESHORE R

AD

Not a Legal Survey.
 The Town of Oakville does not
 warrant the accuracy of any
 information on this drawing.

Town of Oakville
 Released Pursuant to the
 Municipal Freedom of Information
 and Protection of Privacy Act
 Copyright Act Applies to Use and Reproduction



LEGEND

- DENOTES SURVEY MONUMENT FOUND
- SURVEY MONUMENT SET
- STANDARD IRON BAR
- IRON BAR
- CUT CROSS
- WITNESS
- IRON PIPE
- FRED G. CUNNINGHAM O.L.S. (1980)

BEARING NOTE

BEARINGS SHOWN HEREON ARE ASTRONOMIC
 AND ARE REFERRED TO THE N 44° 56' 00" W
 OF THE N. E. LIMIT OF THIRD LINE
 IN ACCORDANCE WITH 20 R. 44 65

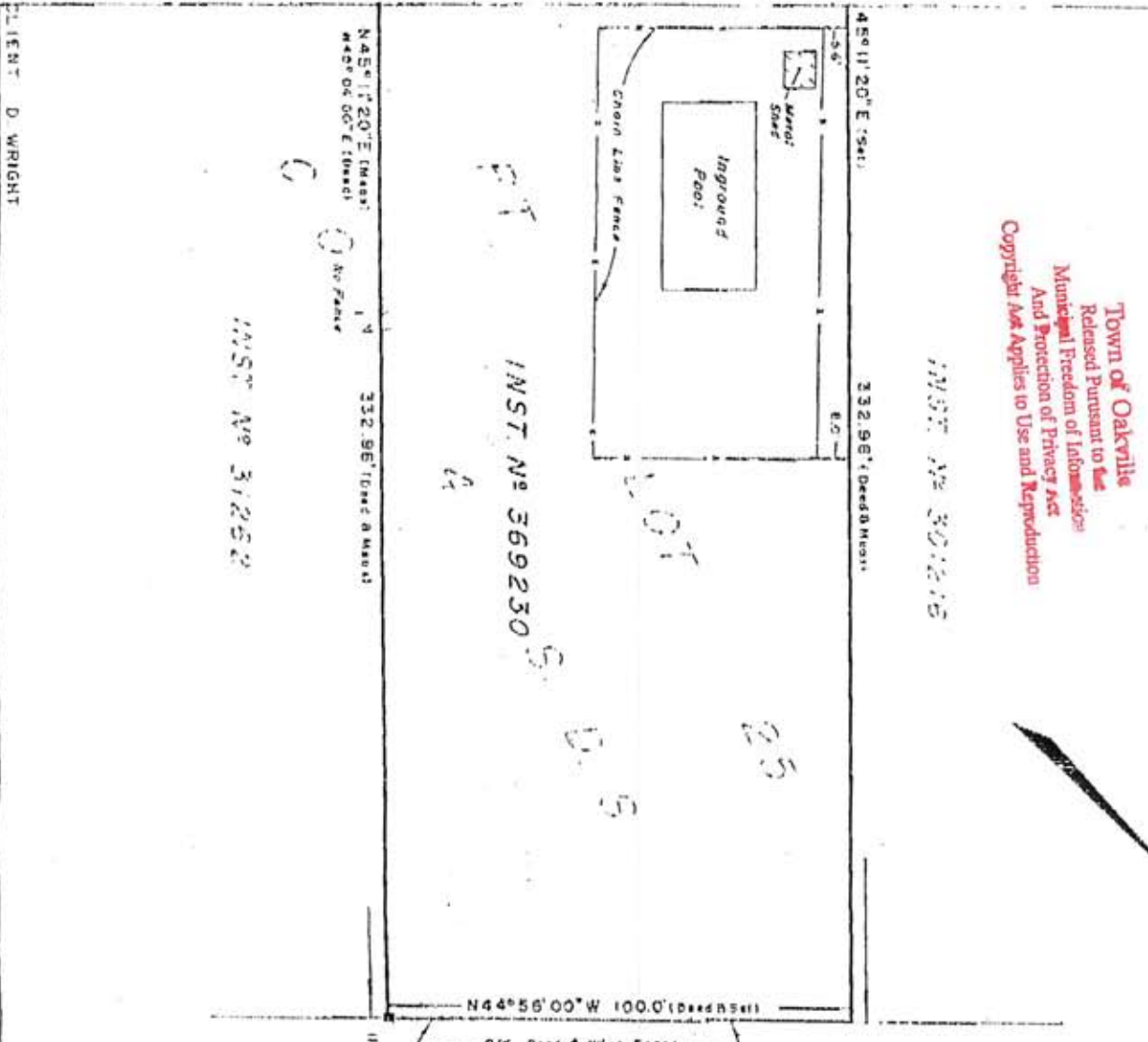
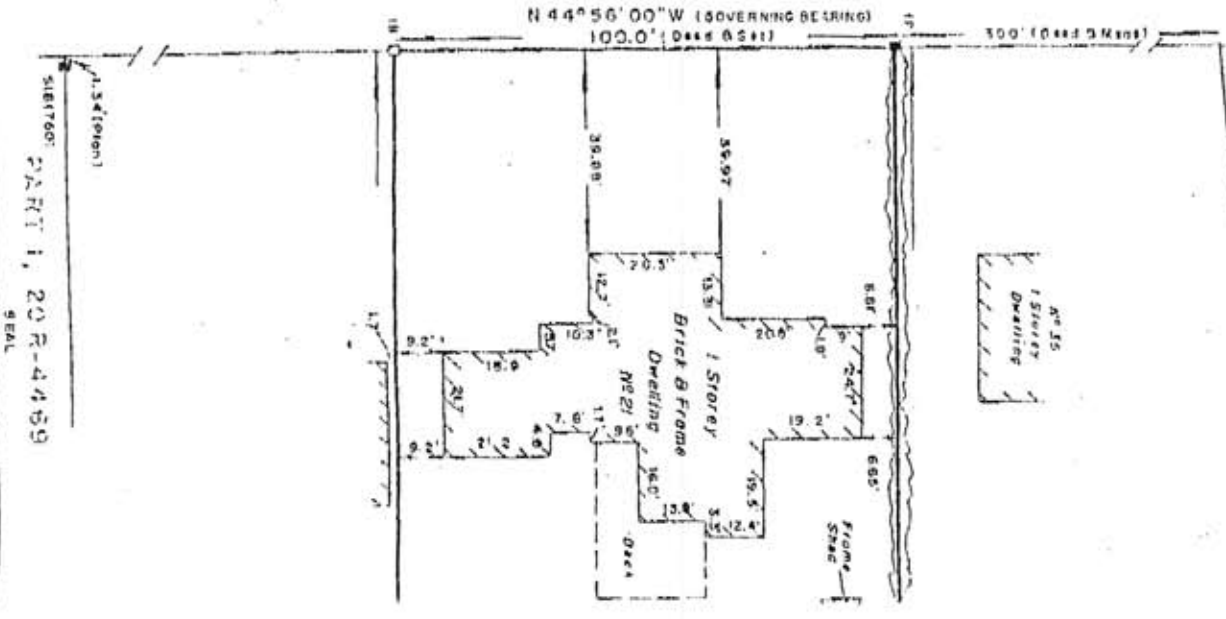
SURVEYOR'S CERTIFICATE

I CERTIFY THAT
 THE FIELD SURVEY REPRESENTED ON THIS PLAN
 WAS COMPLETED ON THE 15th DAY OF APRIL
 1987

DATE APRIL 20, 1987

Per: FRED G. CUNNINGHAM
 ONTARIO LAND SURVEYOR
 FRED G. CUNNINGHAM
 INCORPORATED
 ONTARIO LAND SURVEYORS
 1021 INDUSTRY STREET
 OAKVILLE
 L6J 2X3
 (416) 845-5214
 MILTON OFFICE 205 MAIN STREET MILTON
 L9T 1H7 (416) 878-6672

THIRD LINE (Road Allowance Between Lots 25 & 26)



LOT 26 R.P. 376