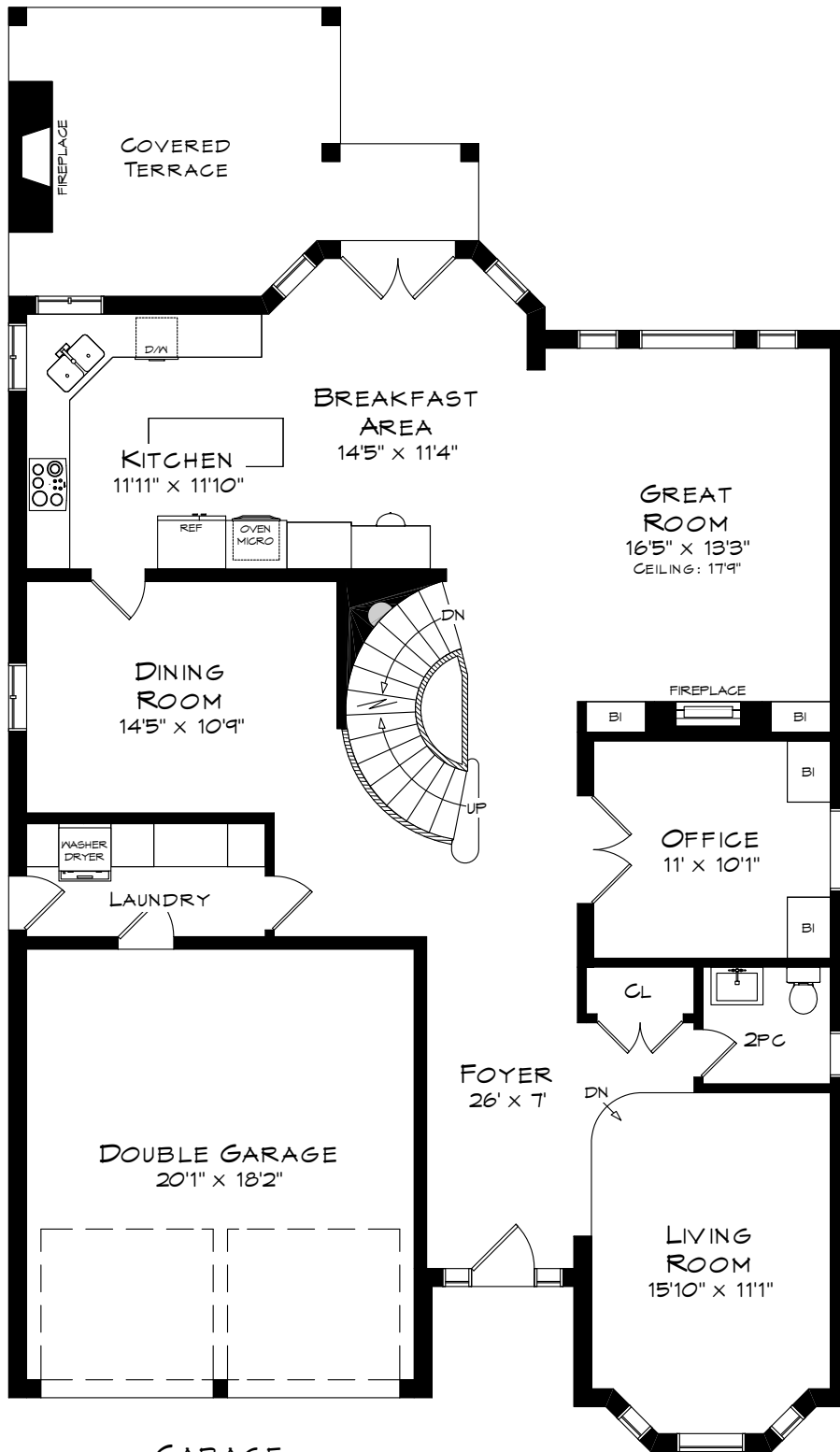


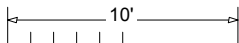
2150 ALDERBROOK DRIVE

TOTAL SQUARE FOOTAGE
4,812 SQ.FT.



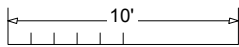
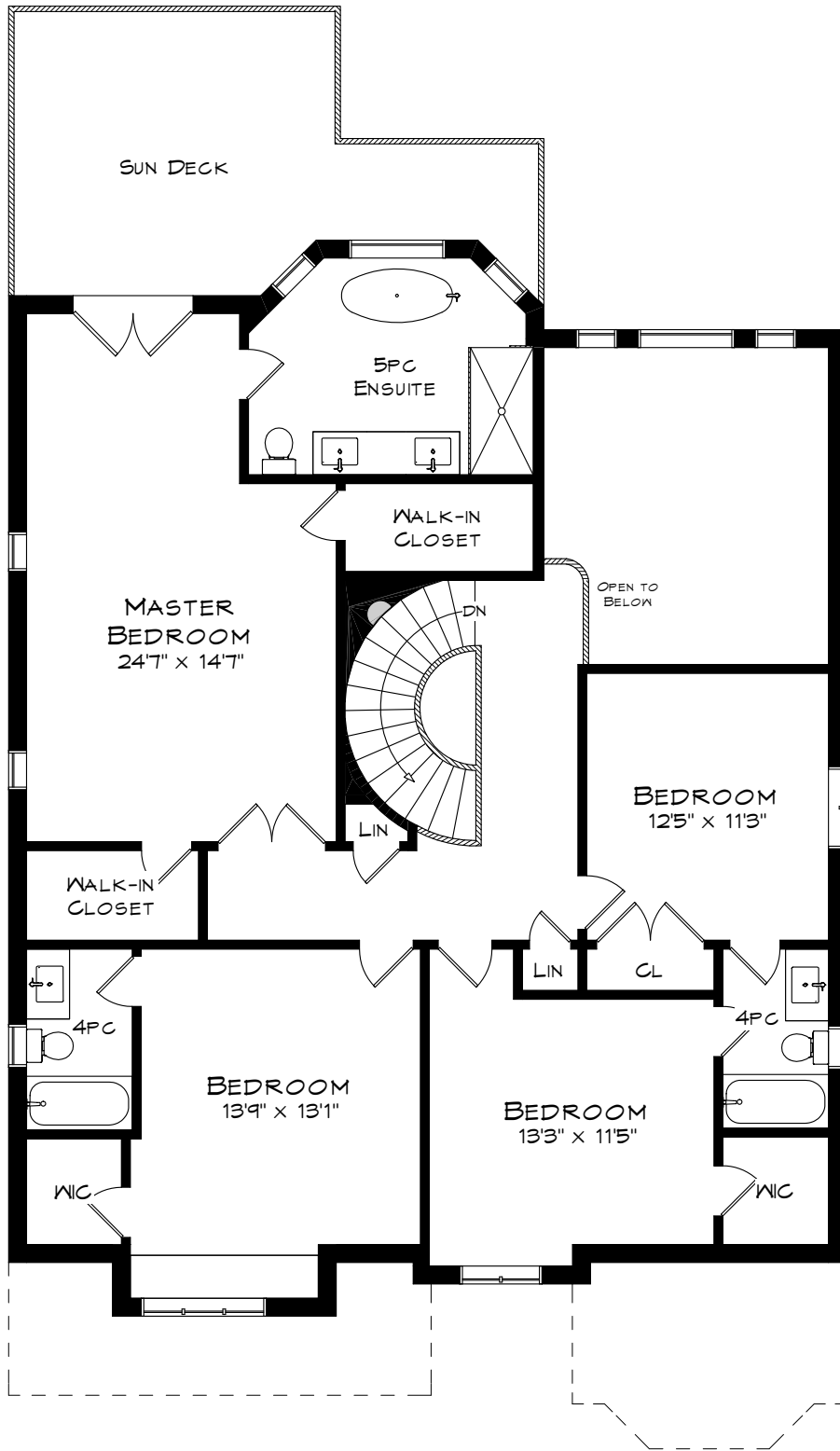
GARAGE
398 SQUARE FEET

MAIN LEVEL
1,590 SQUARE FEET
CEILING: 9'



Measurements may not be 100% accurate
and should be used as a guideline only.
May - 2018

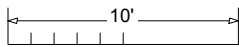
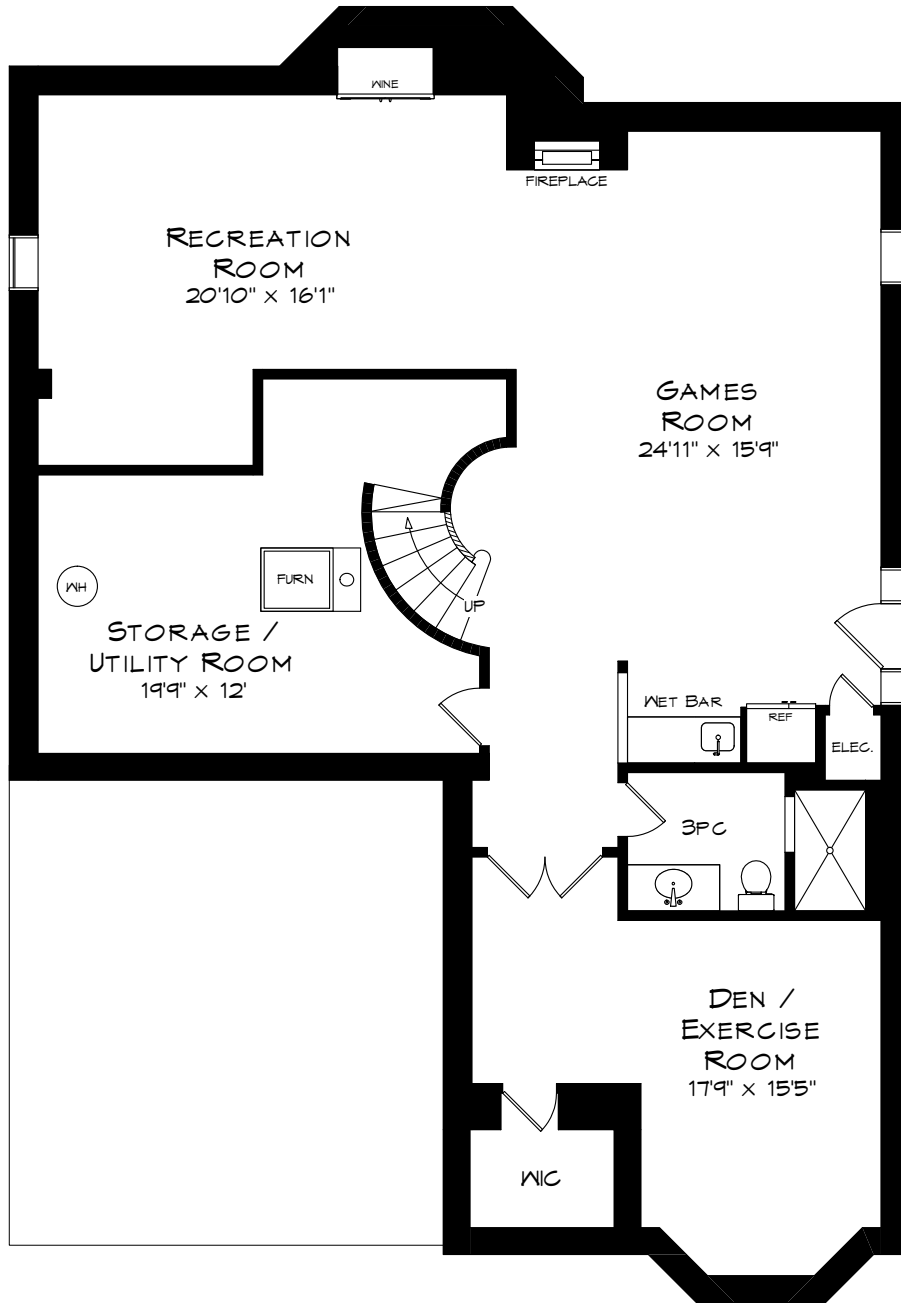
2150 ALDERBROOK DRIVE



UPPER LEVEL
1,580 SQUARE FEET

Measurements may not be 100% accurate
and should be used as a guideline only.
May - 2018

2150 ALDERBROOK DRIVE



Measurements may not be 100% accurate and should be used as a guideline only.
May - 2018

LOWER LEVEL
1,642 SQUARE FEET