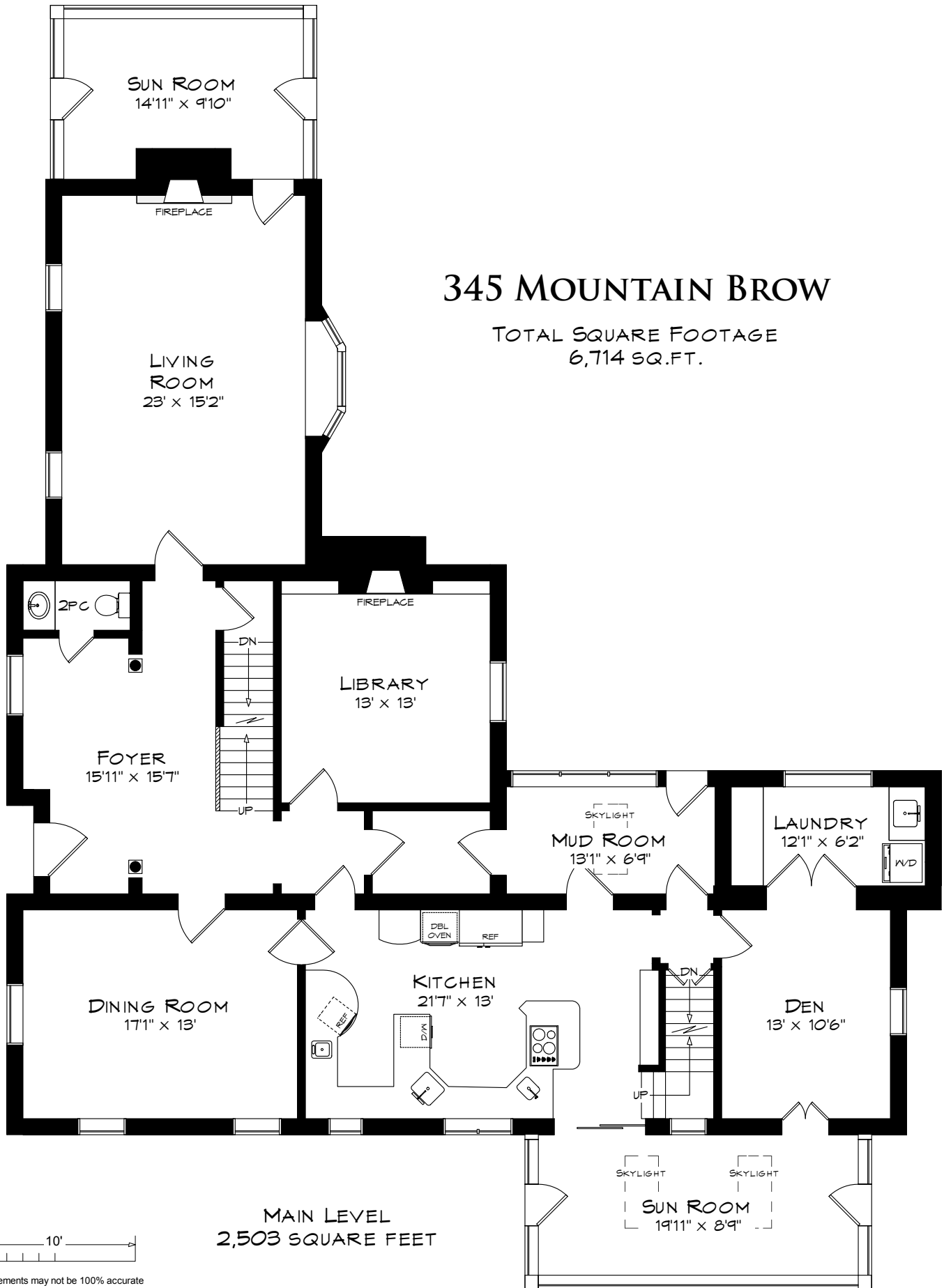
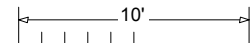


345 MOUNTAIN BROW

TOTAL SQUARE FOOTAGE
6,714 SQ.FT.



MAIN LEVEL
2,503 SQUARE FEET

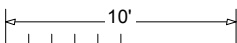


Measurements may not be 100% accurate
and should be used as a guideline only.
August - 2018

345 MOUNTAIN BROW

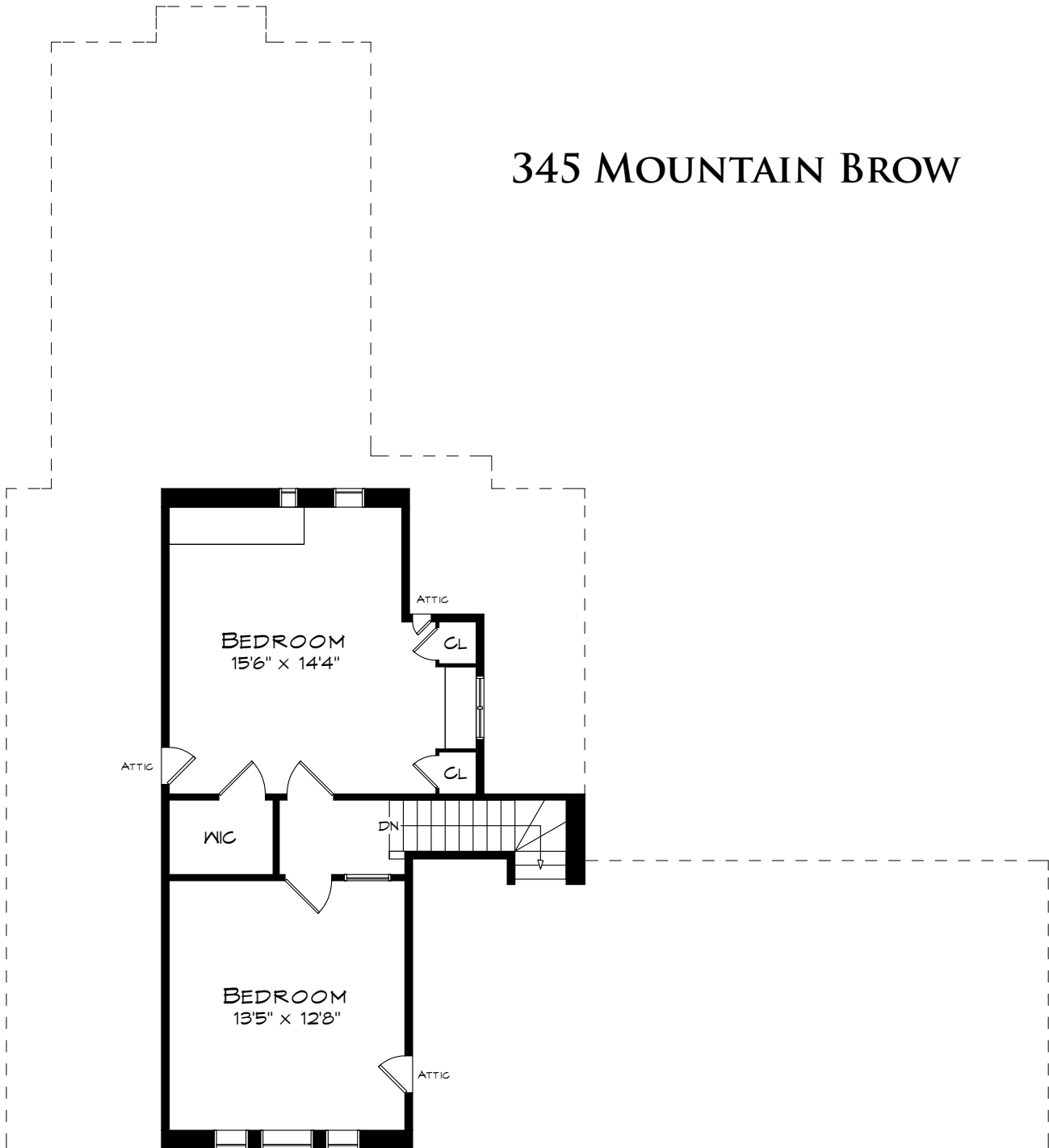


SECOND LEVEL
1,927 SQUARE FEET

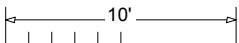


Measurements may not be 100% accurate
and should be used as a guideline only.
August - 2018

345 MOUNTAIN BROW

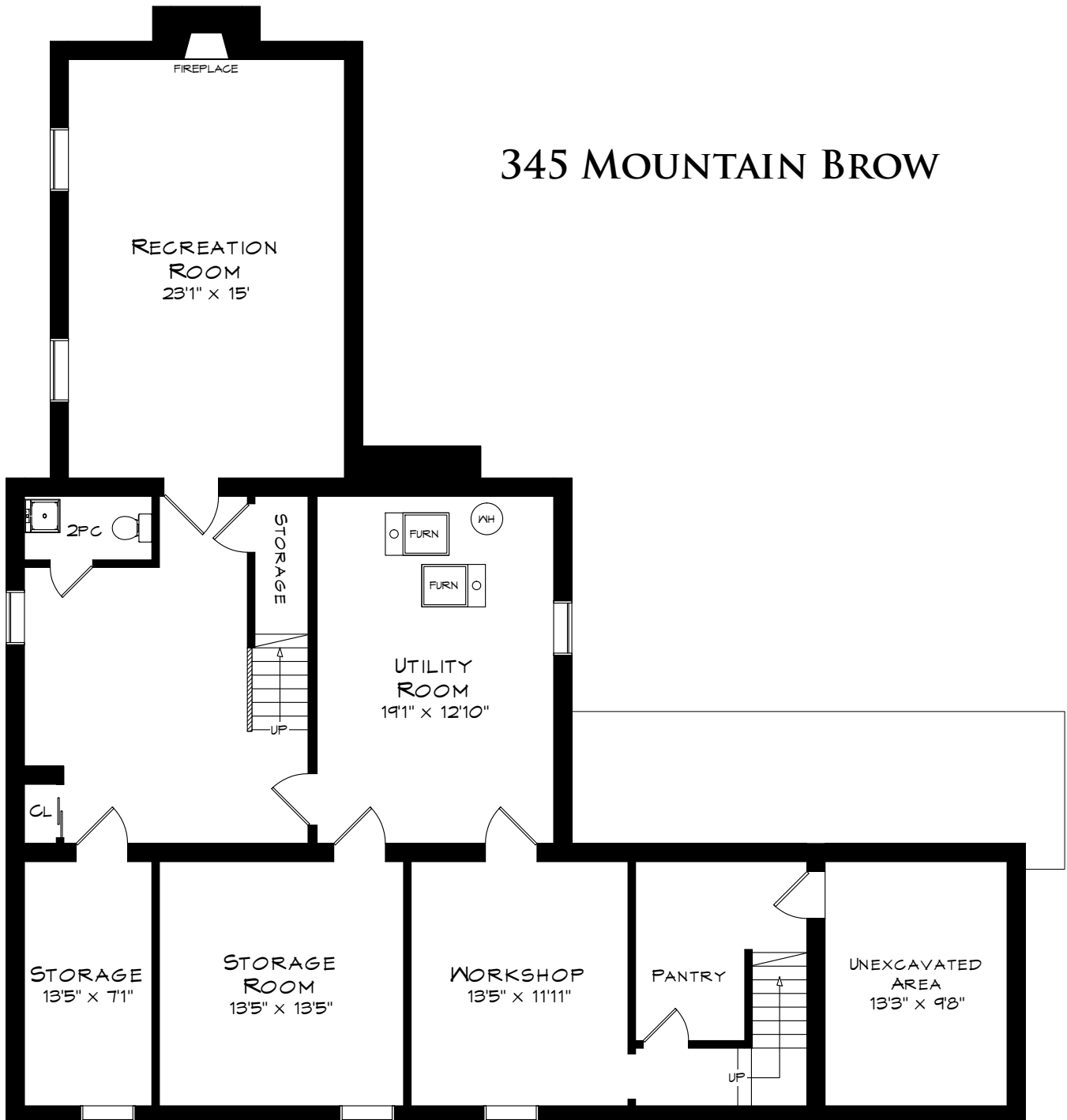


THIRD LEVEL
529 SQUARE FEET

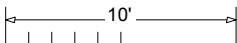


Measurements may not be 100% accurate
and should be used as a guideline only.
August - 2018

345 MOUNTAIN BROW



LOWER LEVEL
1,755 SQUARE FEET



Measurements may not be 100% accurate
and should be used as a guideline only.
August - 2018