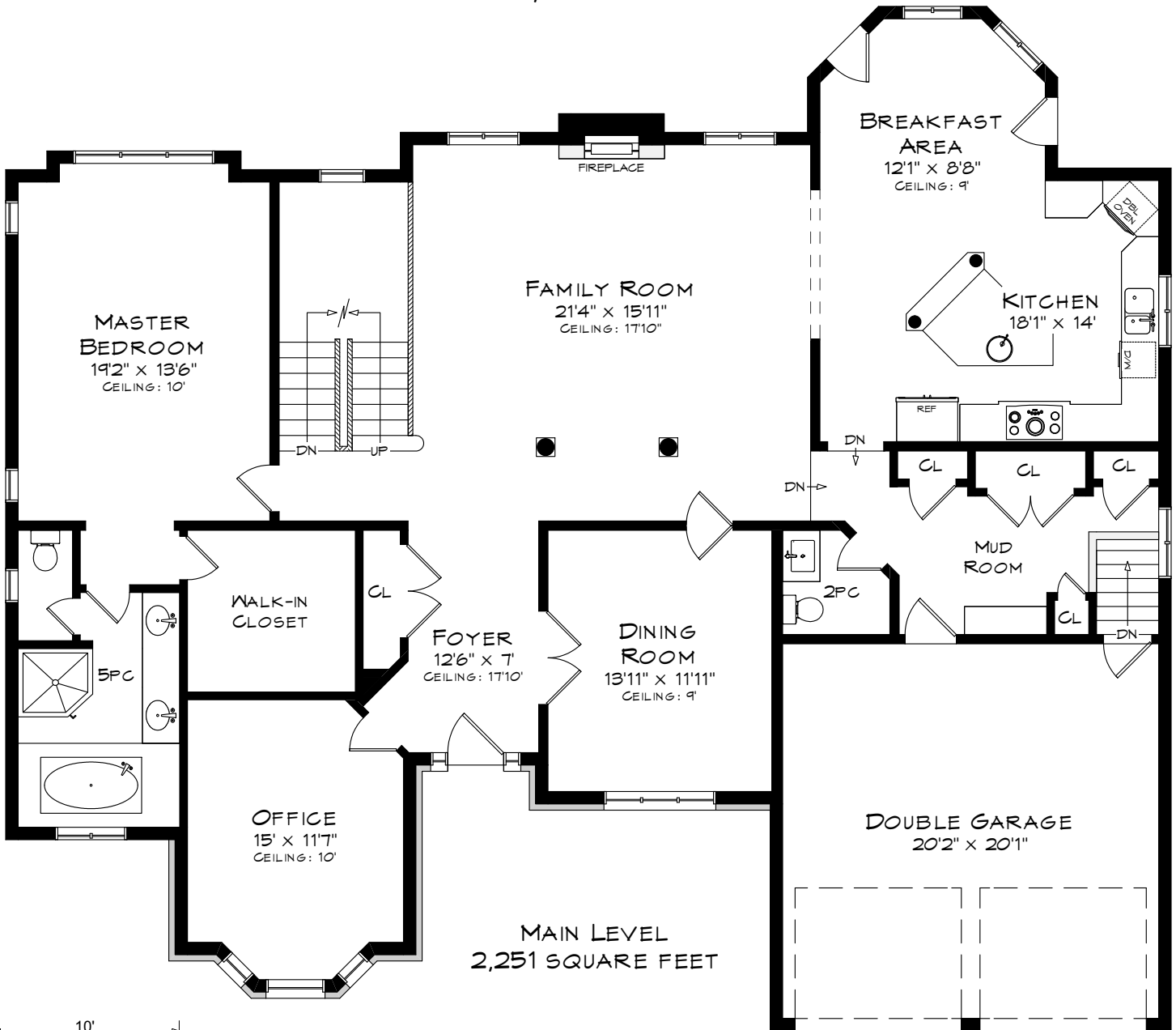


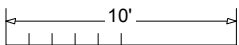
1231 RIVERBANK WAY

TOTAL SQUARE FOOTAGE
5,729 SQ.FT.



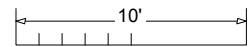
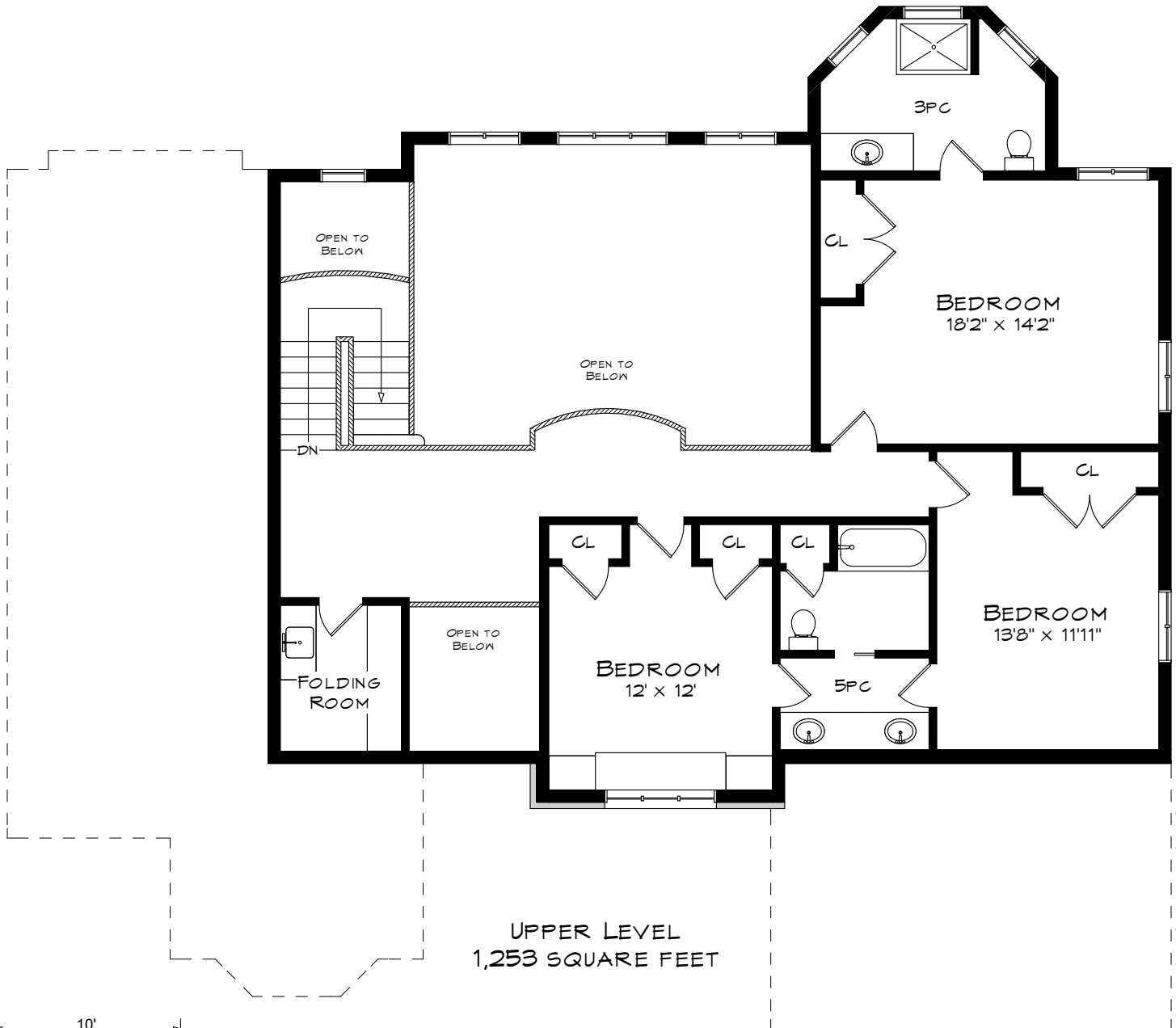
MAIN LEVEL
2,251 SQUARE FEET

GARAGE
440 SQUARE FEET



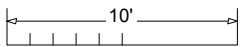
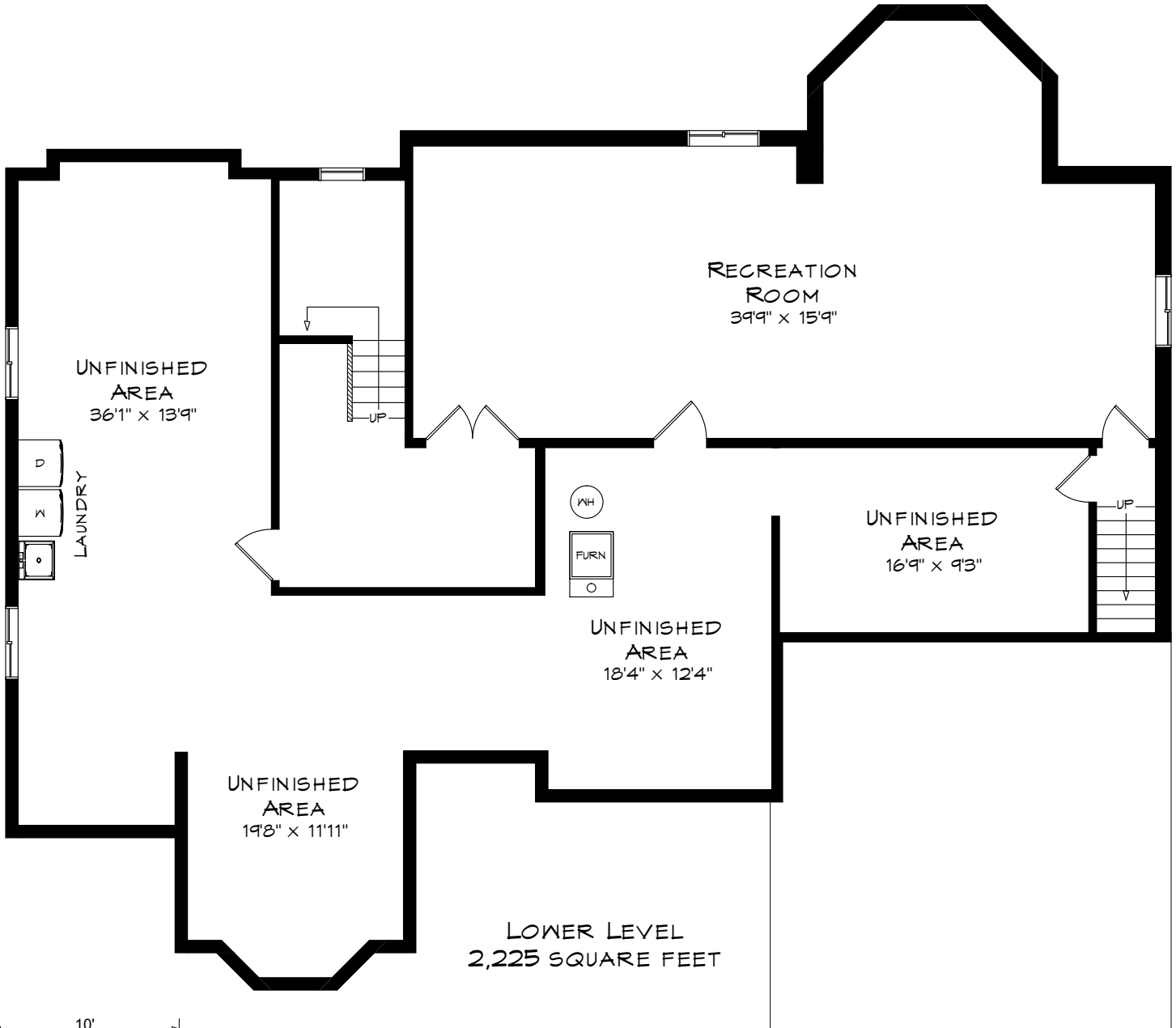
Measurements may not be 100% accurate
and should be used as a guideline only.
October - 2018

1231 RIVERBANK WAY



Measurements may not be 100% accurate and should be used as a guideline only.
October - 2018

1231 RIVERBANK WAY



Measurements may not be 100% accurate and should be used as a guideline only.
October - 2018