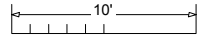
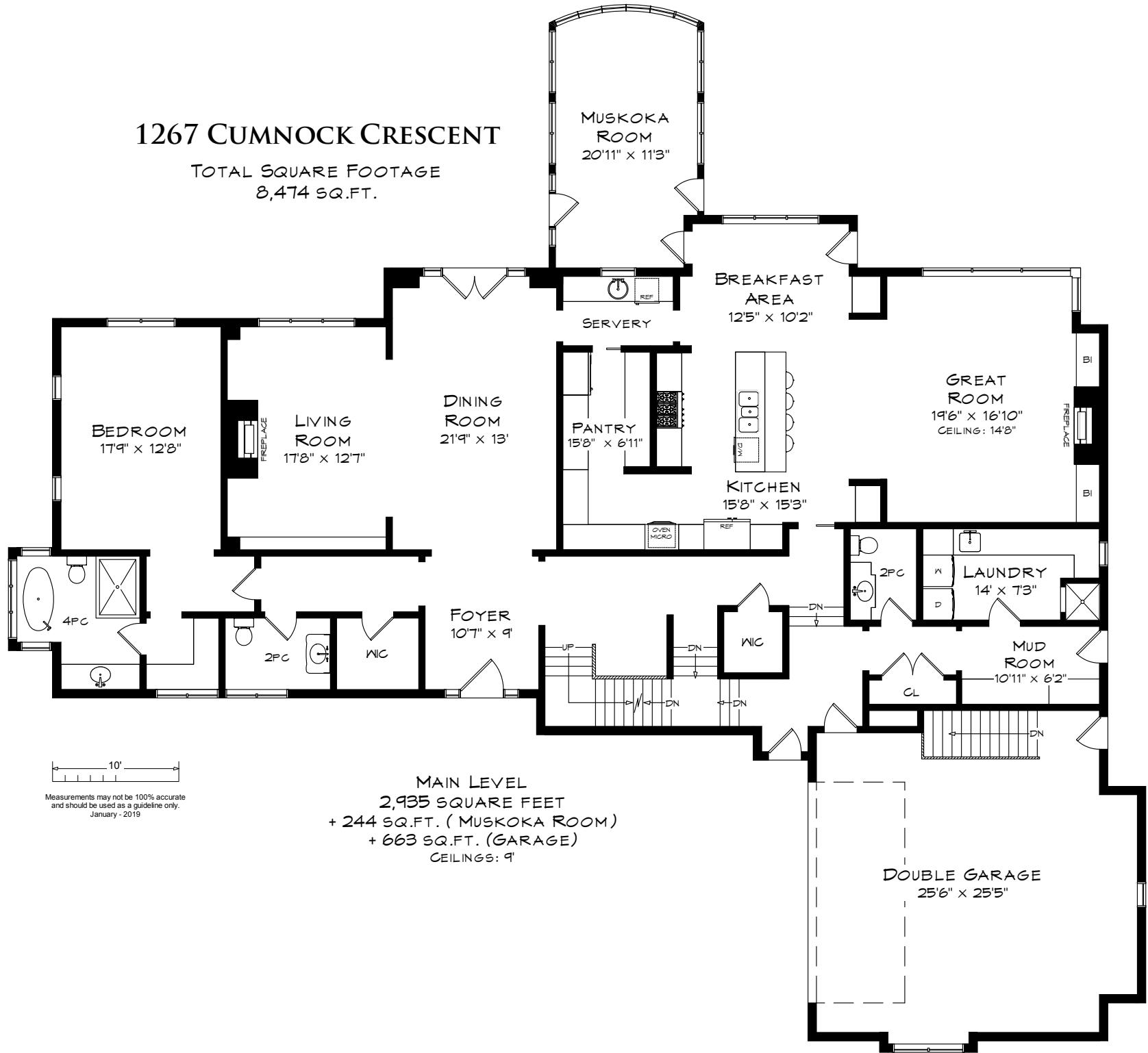


1267 CUMNOCK CRESCENT

TOTAL SQUARE FOOTAGE
8,474 SQ.FT.

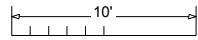
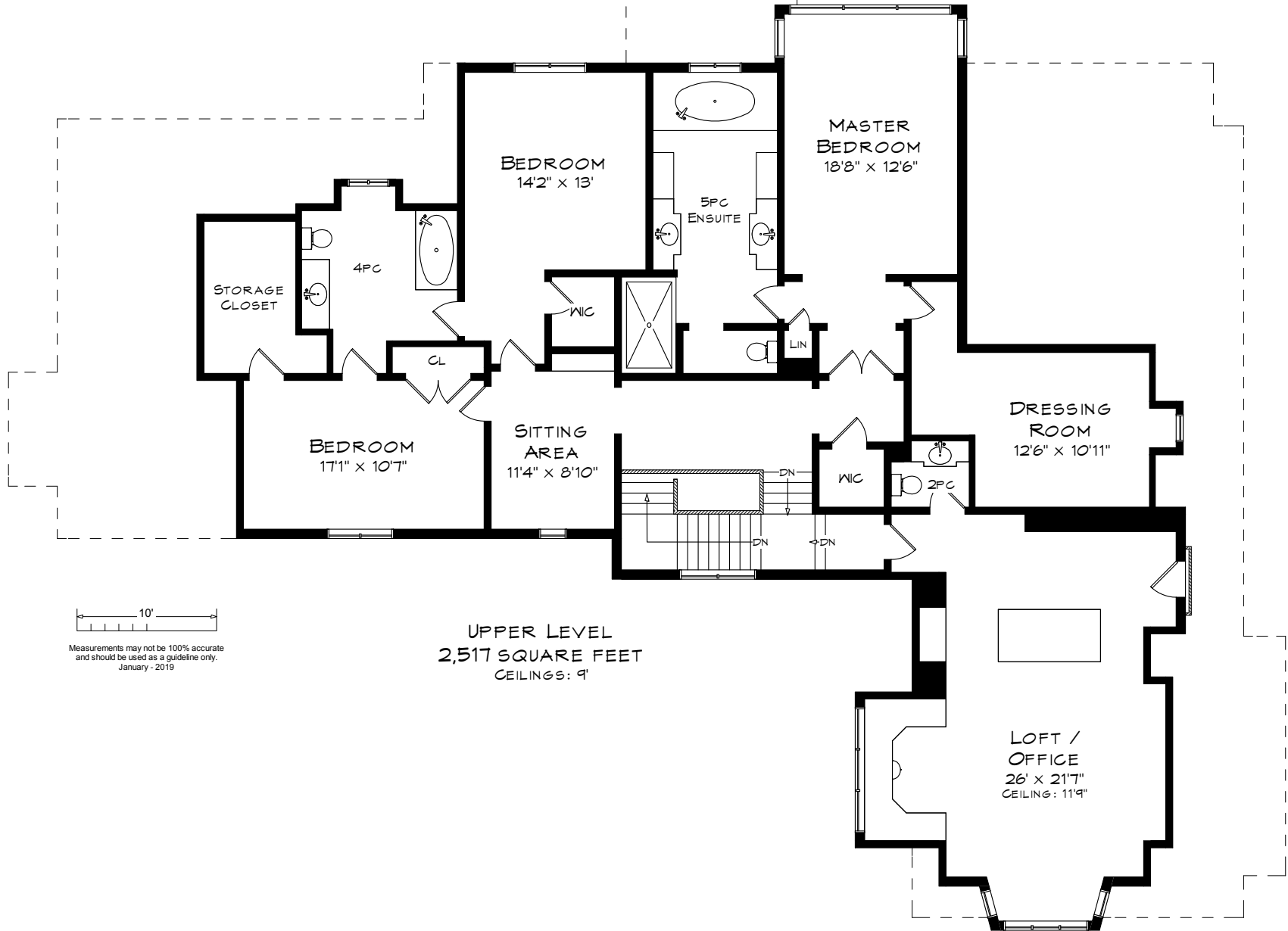


Measurements may not be 100% accurate
and should be used as a guideline only.
January - 2019

MAIN LEVEL
2,935 SQUARE FEET
+ 244 SQ.FT. (MUSKOKA ROOM)
+ 663 SQ.FT. (GARAGE)
CEILINGS: 9'

DOUBLE GARAGE
25'6" x 25'5"

1267 CUMNOCK CRESCENT



Measurements may not be 100% accurate and should be used as a guideline only.
January - 2019

UPPER LEVEL
2,517 SQUARE FEET
CEILING: 9'

LOFT /
OFFICE
26' x 21'7"
CEILING: 11'9"

