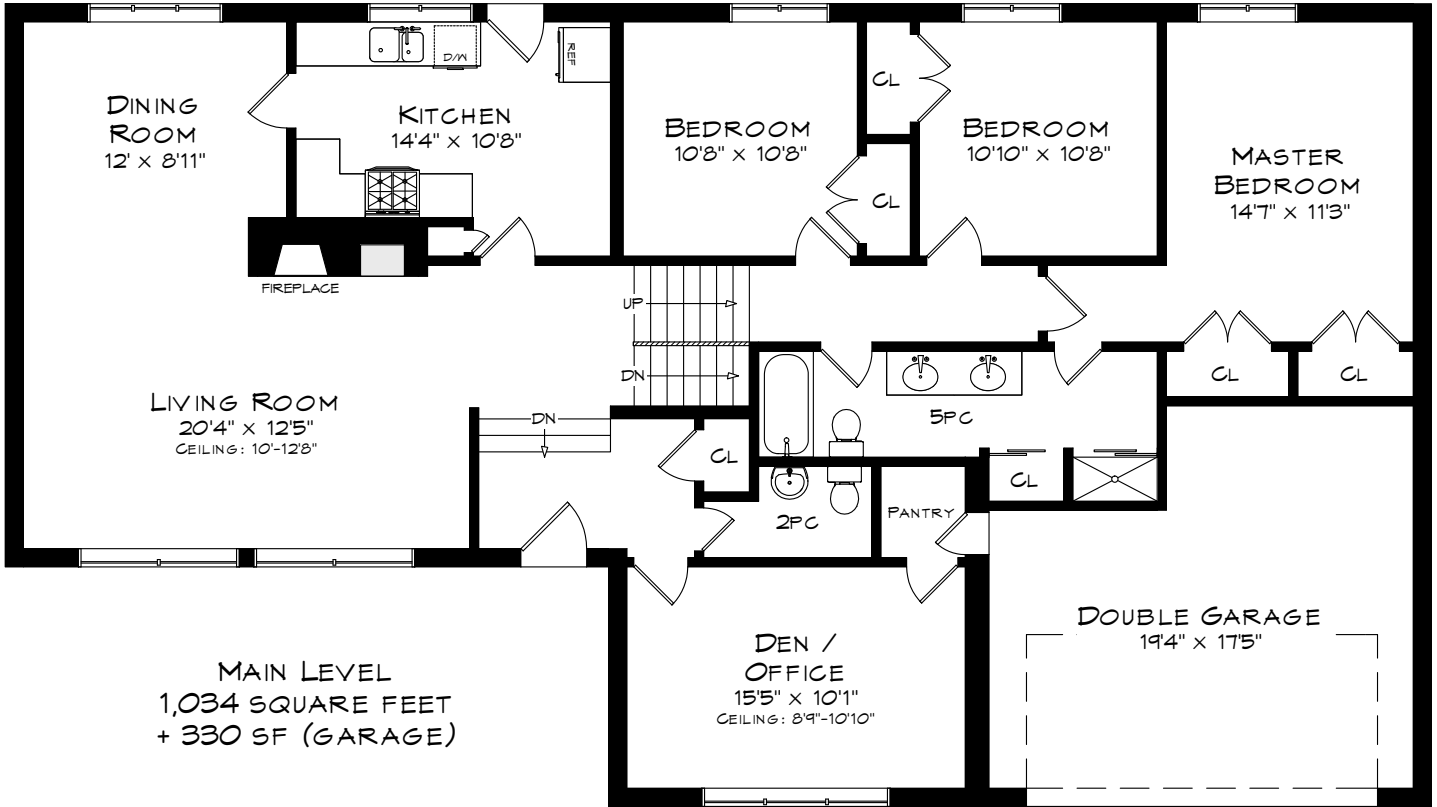


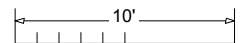
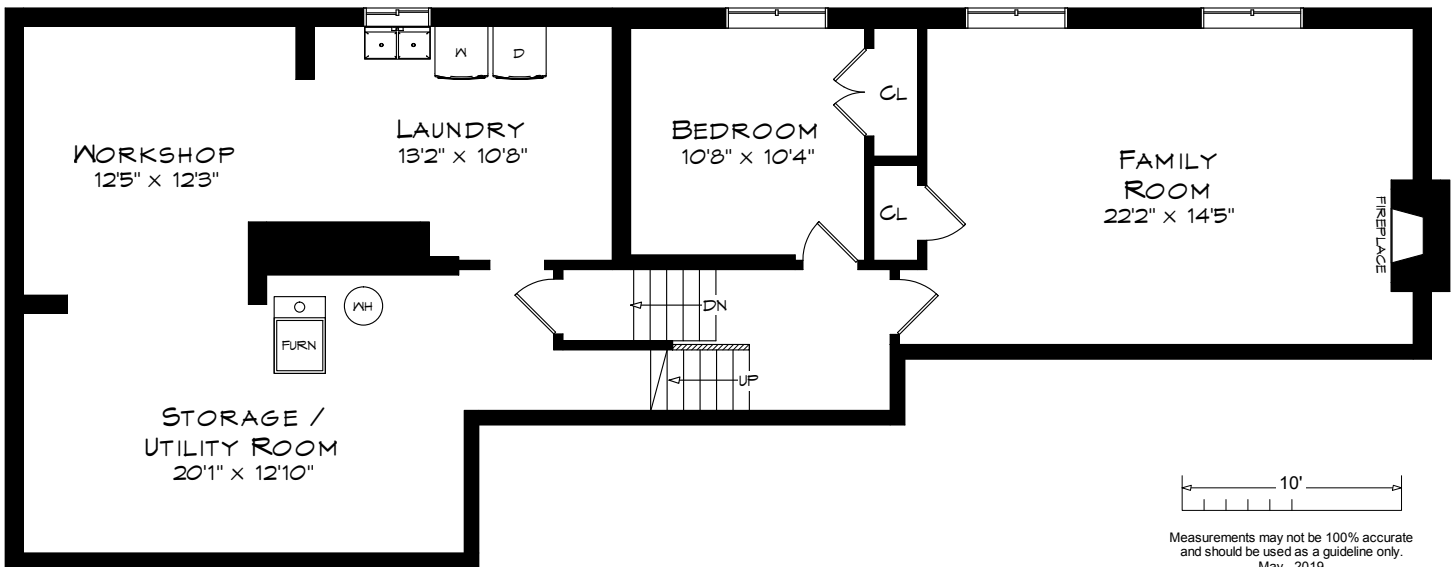
173 DUNWOODY DRIVE

TOTAL SQUARE FOOTAGE
3,062 SQ.FT.

UPPER LEVEL
716 SQUARE FEET



LOWER LEVEL
669 SQUARE FEET



Measurements may not be 100% accurate
and should be used as a guideline only.
May - 2019

BASEMENT LEVEL
643 SQUARE FEET