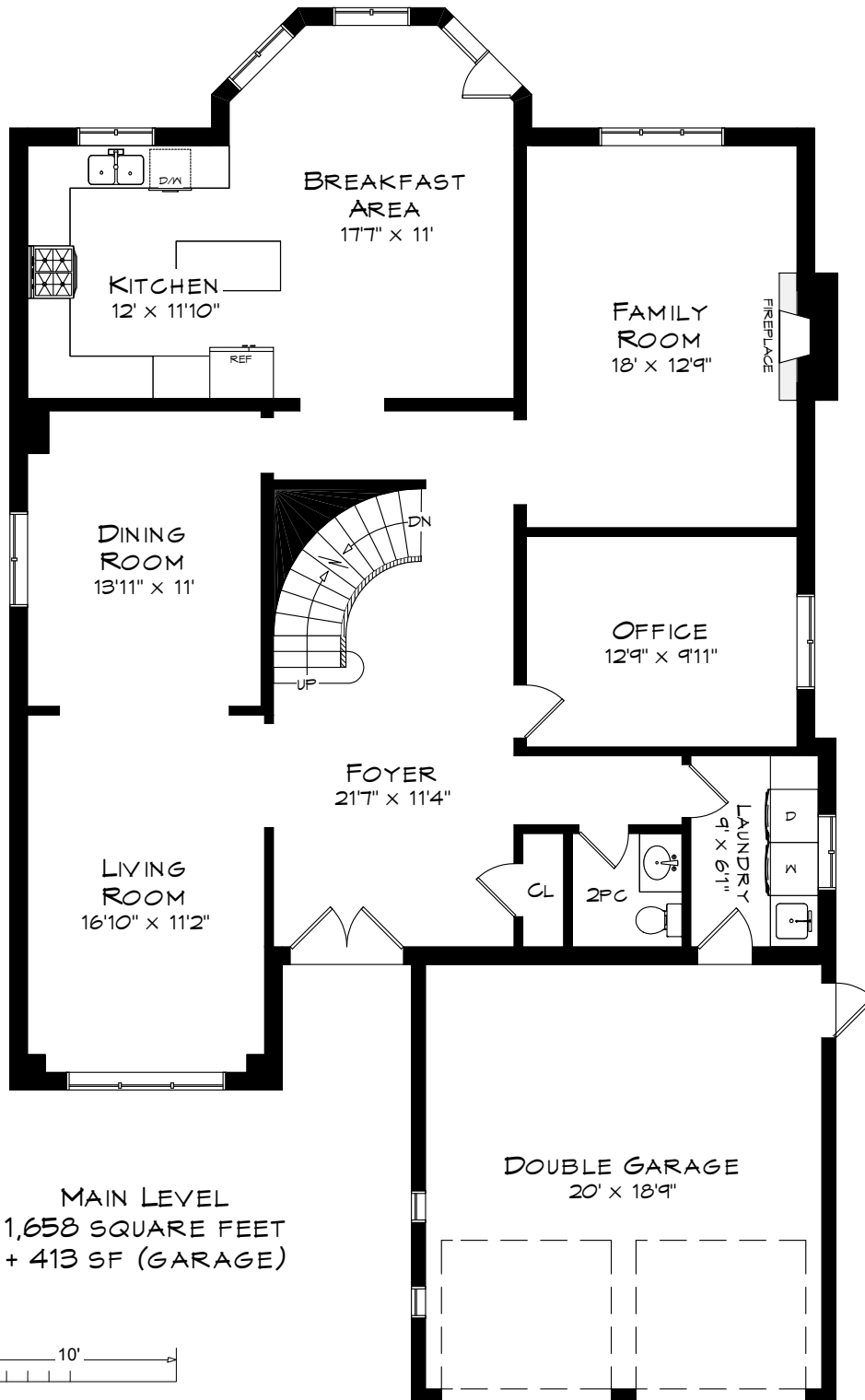
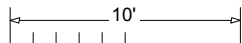


2948 SYCAMORE STREET

TOTAL SQUARE FOOTAGE
4,937 SQ.FT.

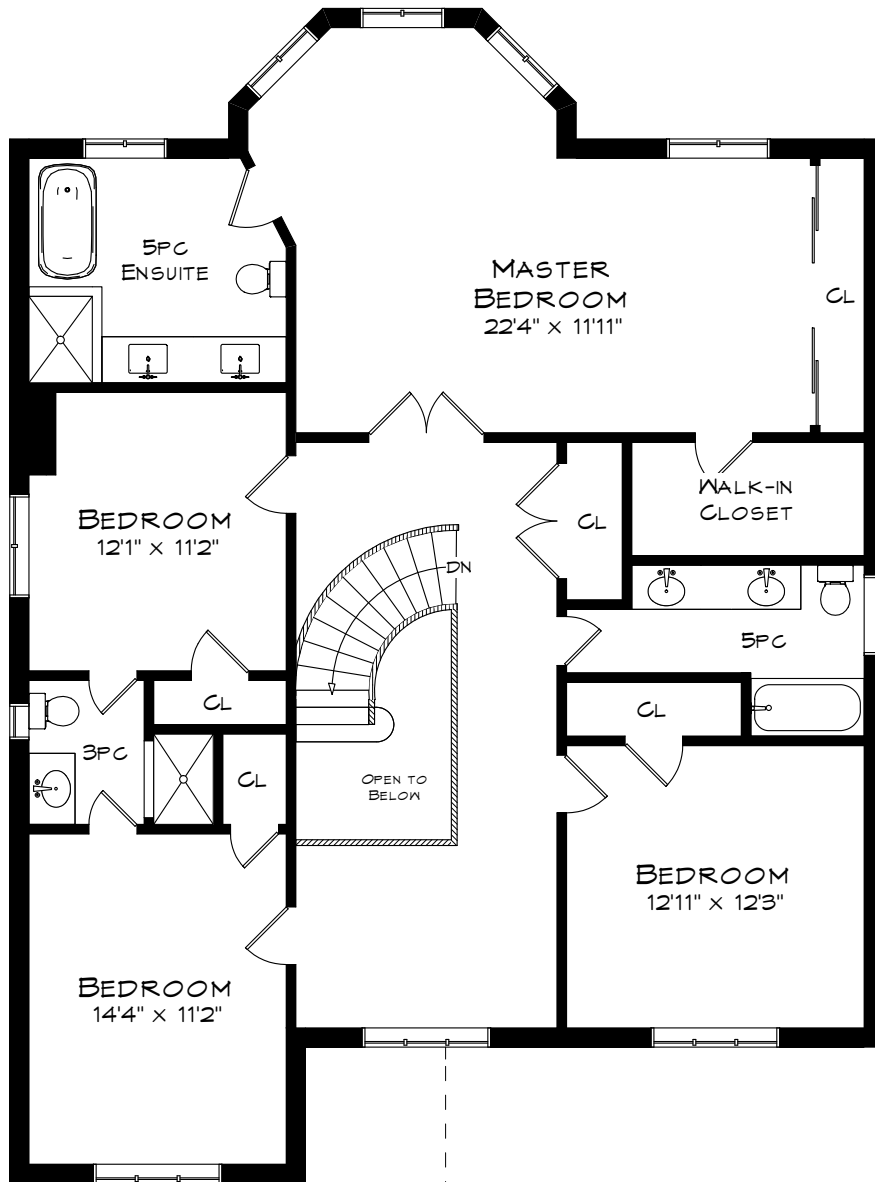


MAIN LEVEL
1,658 SQUARE FEET
+ 413 SF (GARAGE)

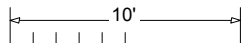


Measurements may not be 100% accurate
and should be used as a guideline only.
April - 2019

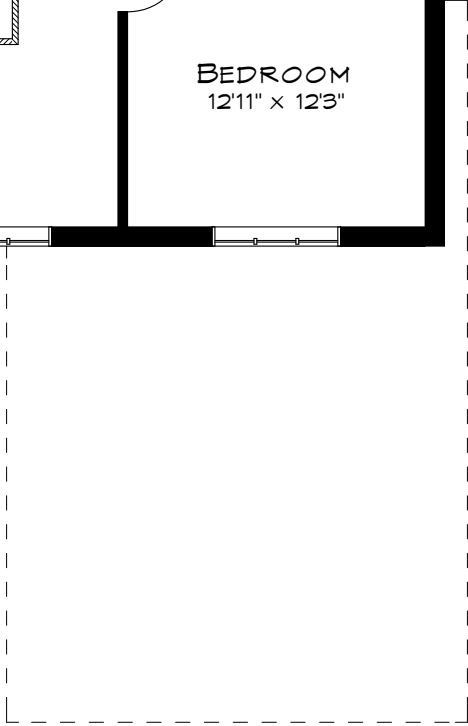
2948 SYCAMORE STREET



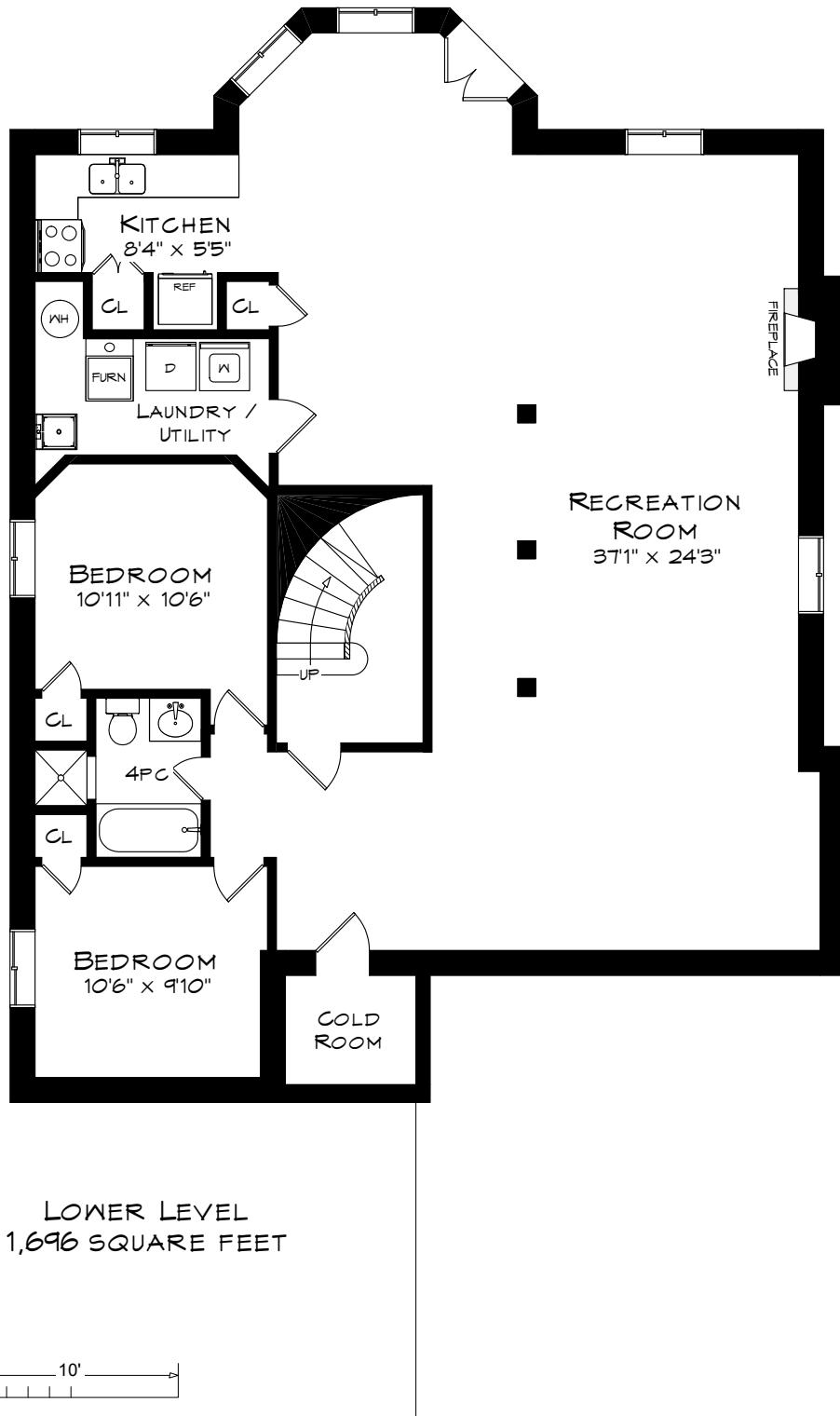
UPPER LEVEL
1,583 SQUARE FEET
+ 57 SF (OPEN TO BELOW)



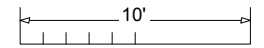
Measurements may not be 100% accurate
and should be used as a guideline only.
April - 2019



2948 SYCAMORE STREET



LOWER LEVEL
1,696 SQUARE FEET



Measurements may not be 100% accurate
and should be used as a guideline only.
April - 2019