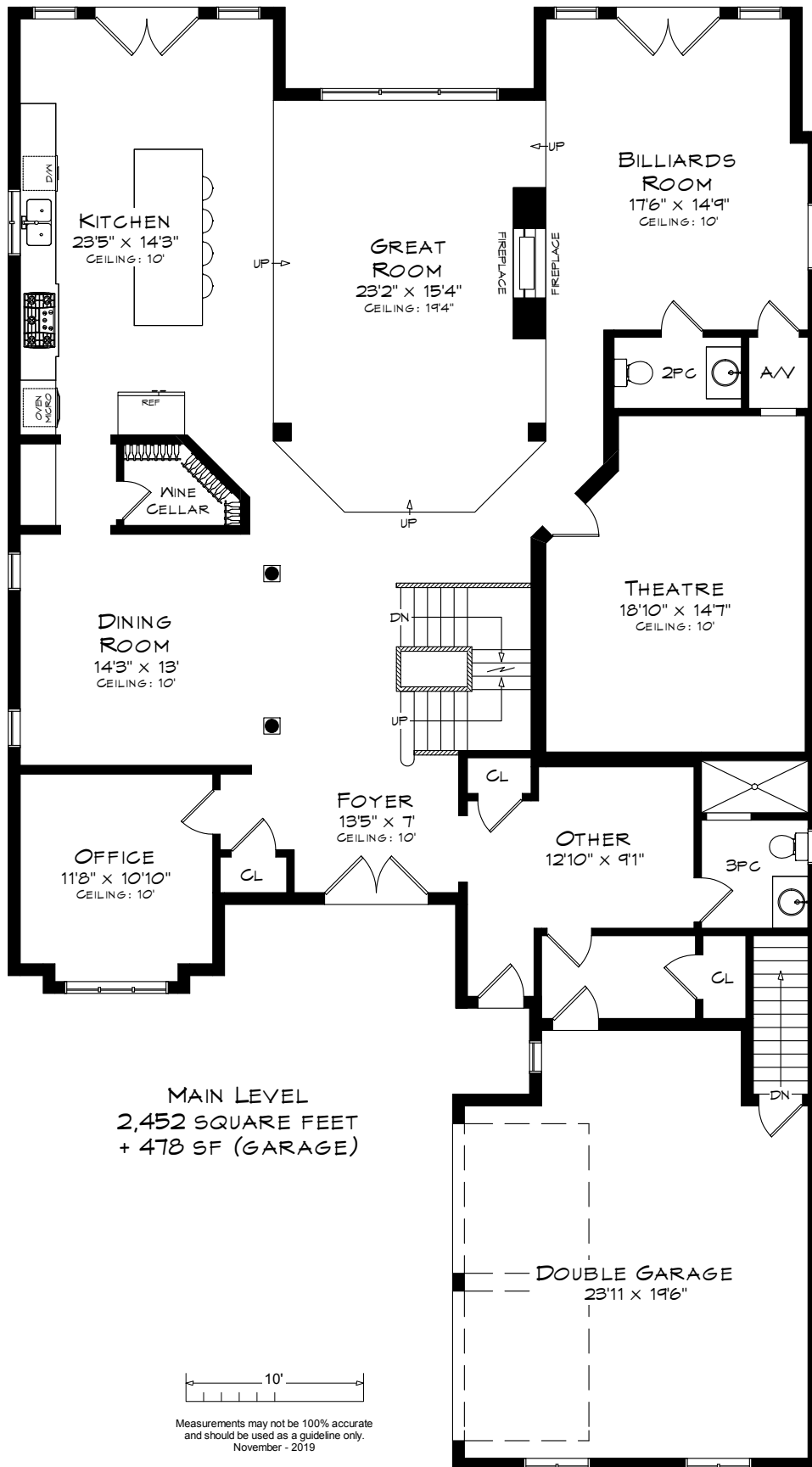
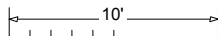


# 599 NORTH SHORE BLVD E

TOTAL SQUARE FOOTAGE  
7,301 SQ.FT.

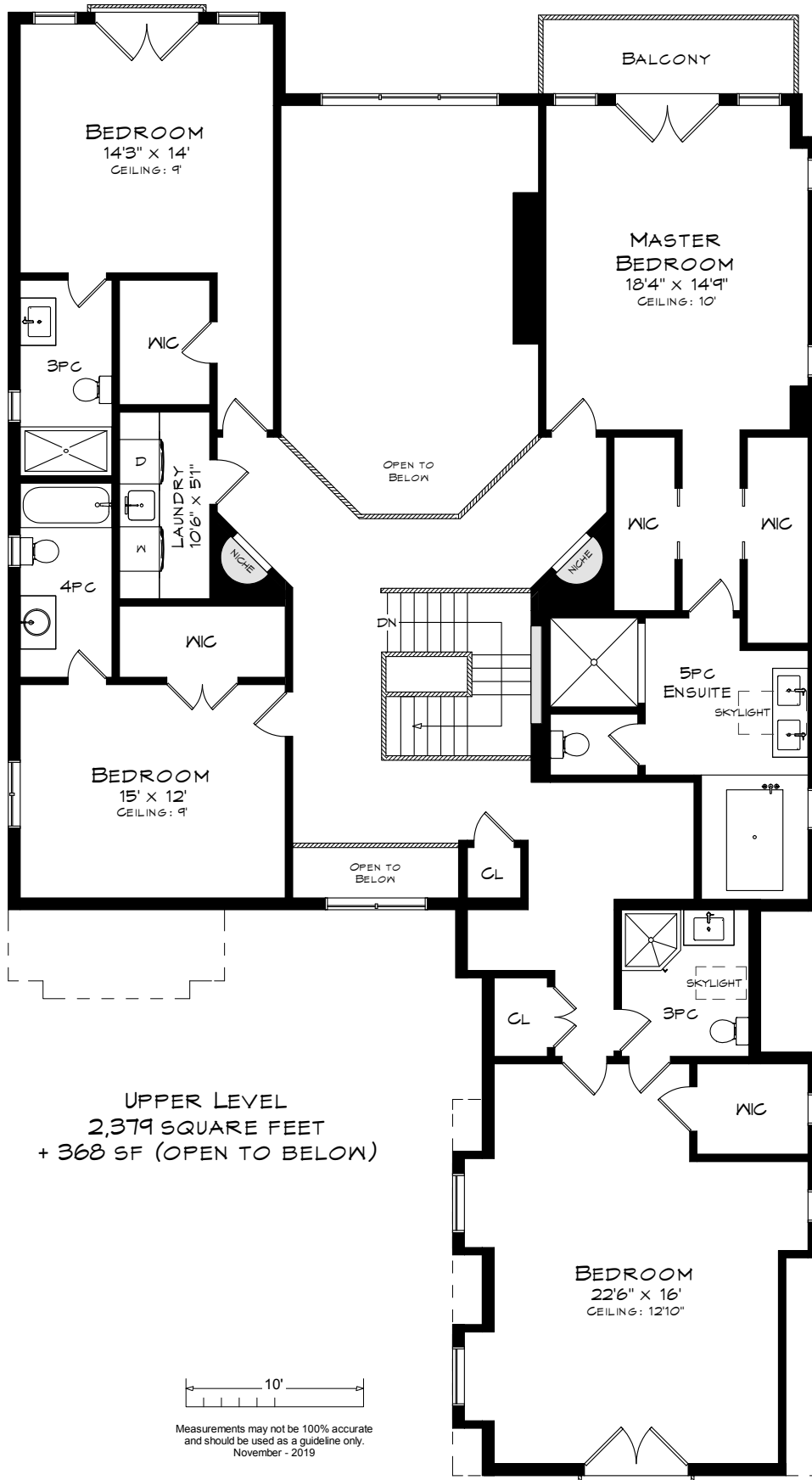


MAIN LEVEL  
2,452 SQUARE FEET  
+ 478 SF (GARAGE)

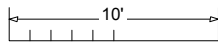


Measurements may not be 100% accurate  
and should be used as a guideline only.  
November - 2019

# 599 NORTH SHORE BLVD E

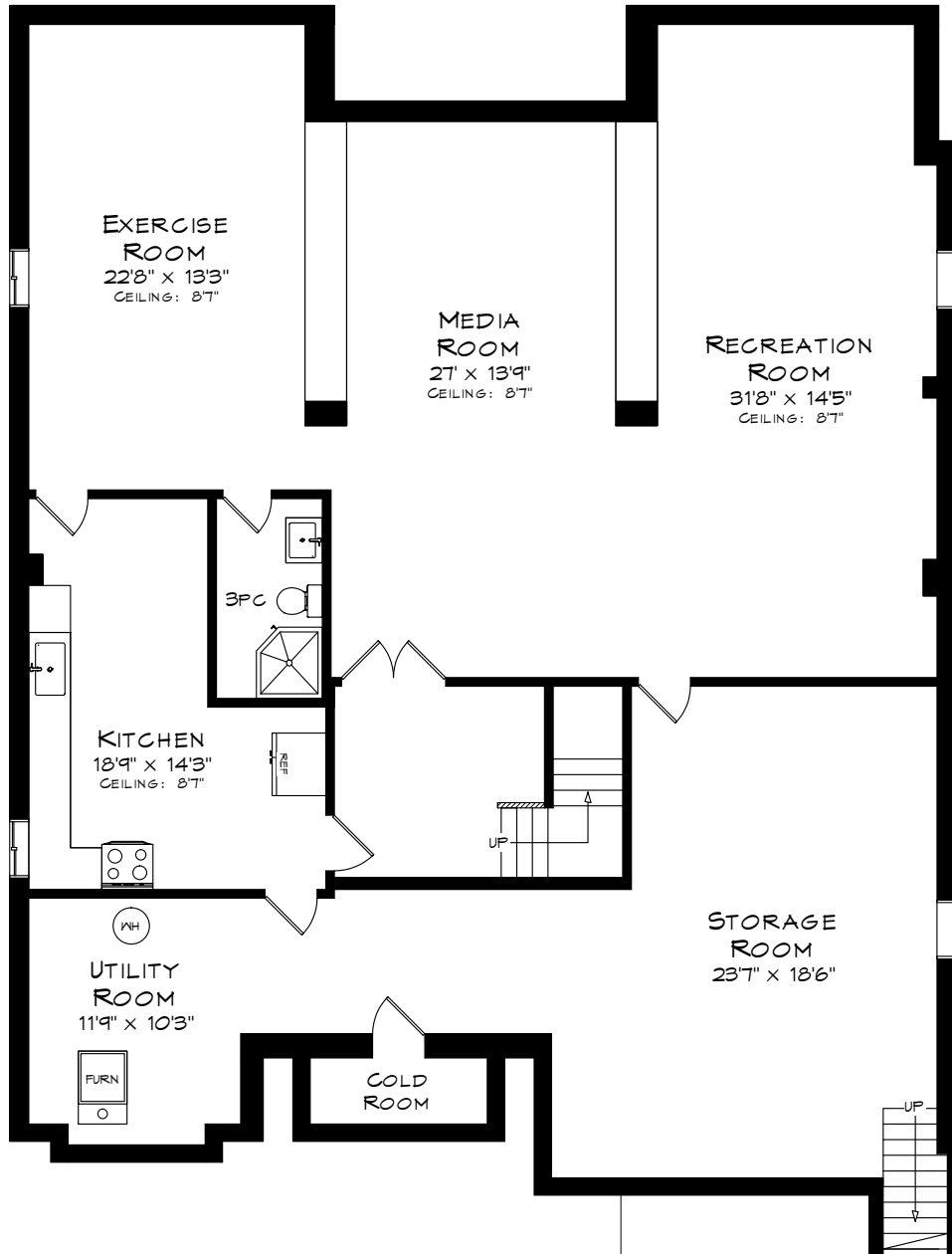


UPPER LEVEL  
2,379 SQUARE FEET  
+ 368 SF (OPEN TO BELOW)

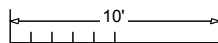


Measurements may not be 100% accurate  
and should be used as a guideline only.  
November - 2019

# 599 NORTH SHORE BLVD E



LOWER LEVEL  
2,470 SQUARE FEET



Measurements may not be 100% accurate  
and should be used as a guideline only.  
November - 2019