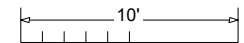
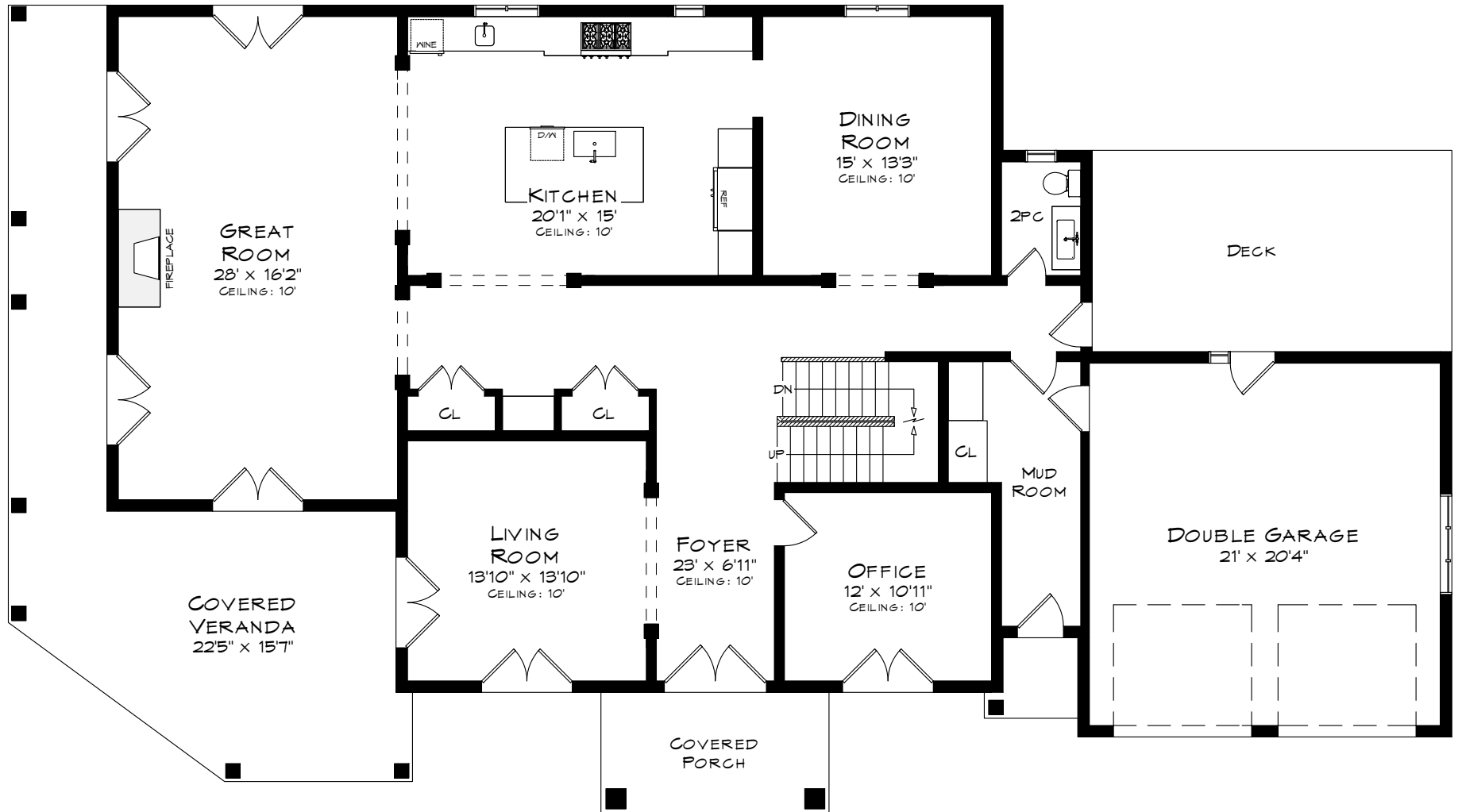


# 5006 LAKESHORE ROAD

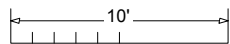
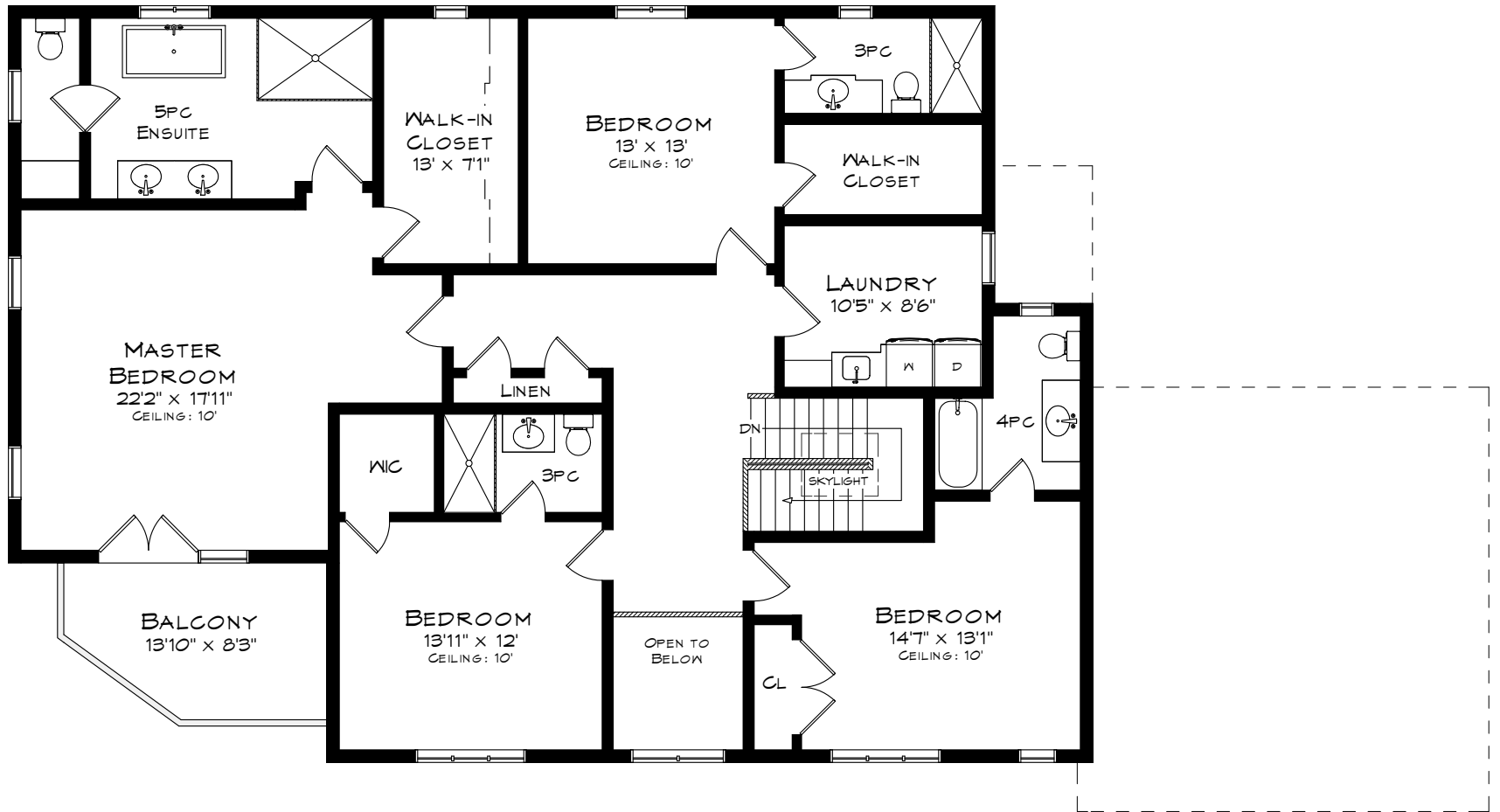
TOTAL SQUARE FOOTAGE  
6,038 SQ.FT.



Measurements may not be 100% accurate  
and should be used as a guideline only.  
September - 2019

MAIN LEVEL  
2,034 SQUARE FEET  
+ 478 SF (GARAGE)  
+ 480 SF (VERANDA)

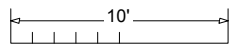
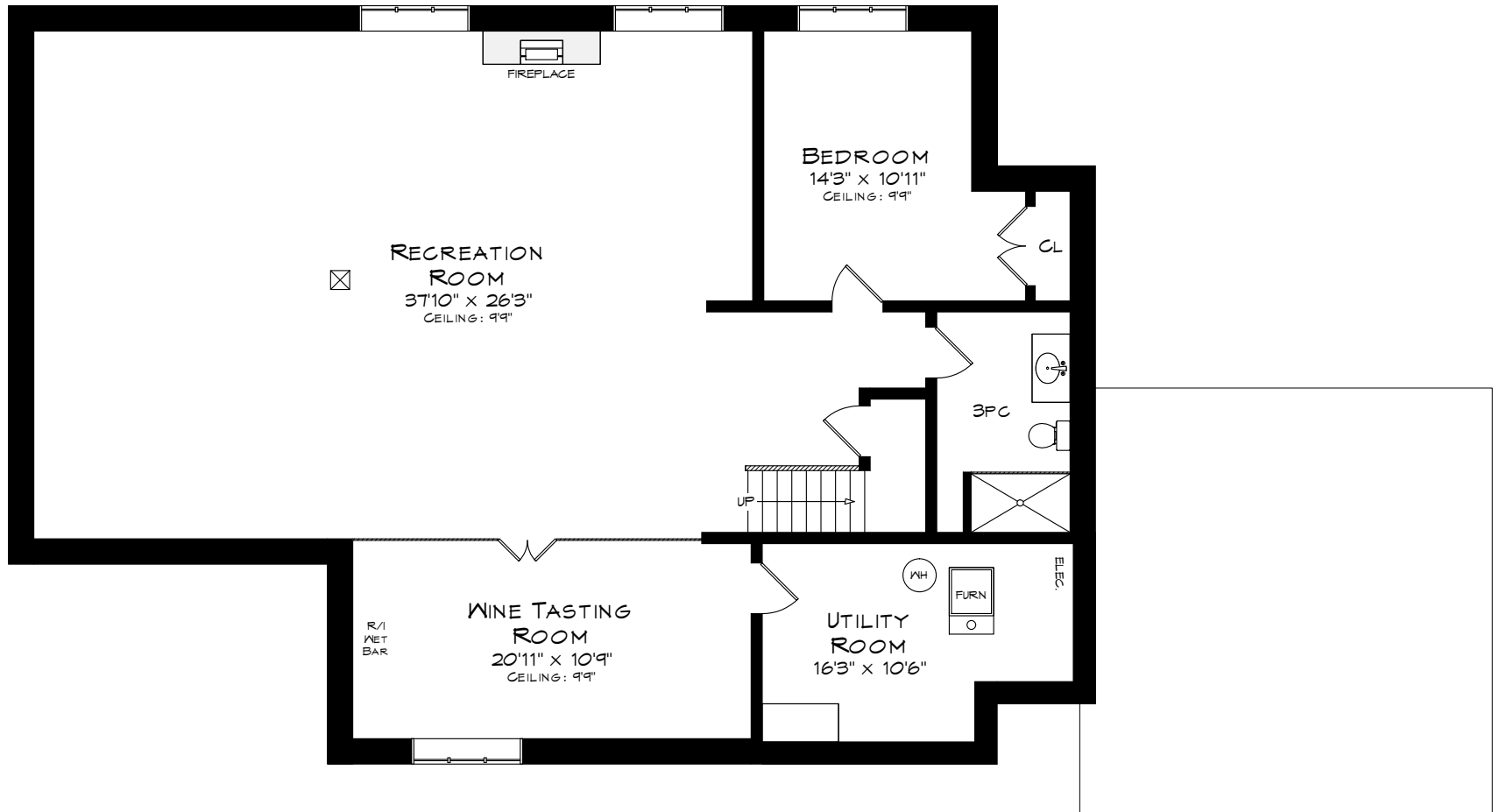
# 5006 LAKESHORE ROAD



Measurements may not be 100% accurate  
and should be used as a guideline only.  
September - 2019

UPPER LEVEL  
1,964 SQUARE FEET  
+ 58 SF (OPEN TO BELOW)  
+ 103 SF (BALCONY)

# 5006 LAKESHORE ROAD



Measurements may not be 100% accurate  
and should be used as a guideline only.  
September - 2019

LOWER LEVEL  
2,040 SQUARE FEET